

## **MILLIONTH DOLLAR AWARDED**

# **Community: Sharing a Common Denominator**

It was a significant year. Could there be a greater understatement? As a nation we helplessly looked with brimming eyes to television images of the most unimaginable scenes. In the blink of a morning, liberties we had taken for granted were being challenged by a far off foe.



Mayor Bill Jones reads the proclamation declaring 2001 to be the Tipp City Area Community Foundations Jubilee Year. In the background is the U.S. Air Force Band of Flight performing at an outdoor concert celebrating the Jubilee Year.

After September 11 we draped ourselves, our cars, homes and businesses in flags to collectively shout, "We are Americans." Being American became our common denominator with an enthusiasm we have not felt for decades.

But to let the sadness of September 11 overshadow the positive things that happened in the Tipp City area in 2001 would be a tragedy also. In our little hamlet, another common denominator is how we pull together as a community to support one another. Let us remember...

Our collective cheer for the Bethel Boys Basketball Team when they won the state championship.

Tipp City Area Community Foundations awarding its one-millionth dollar to community projects since 1943. The actual grant that put the Foundation over the million-dollar mark was made to the Tipp City Public Library to purchase computers.

Elizabeth Spano's brave battle with cancer, which brought together students, parents and neighbors to support her and her parents, Marguerite and Sam, and brother Joey.

The Foundations' Jubilee Year public outdoor concert featuring the U. S. Air Force Band of Flight.

Ohio's First Lady Hope Taft's visit to the Tipp City Public Library to mark the first anniversary of "Baby Let's Read!", a program funded by the Foundation.

## **Volunteers**

At the core of the Tipp City Area Community Foundations is the dedication and commitment of its volunteers, bringing their integrity, ability and knowledge of the community's charitable needs. The Foundation is grateful for this citizen involvement, which characterizes a true community foundation. These volunteers were active in their responsibilities with these funds, as of December 31, 2001.

**Lester & Cleon Studebaker Bowers Scholarship-**  
Mara Lance, Ann McKenzie

**David W. Dinsmore Scholarship-**  
Alan Beach, Mara Lance, David Vail

**Jeanette C. Gaston Memorial Music Scholarship-**  
Michele Grogean, Steve Parks, Charles Wray

**Heather & Holly LeGros Memorial Scholarship-**  
Betty Bross, Jeff Sakal, Charles Wray

**John S. & Louise T. Miller Memorial Scholarship-**  
Mara Lance, John A. Miller

**Robert E. Nessel Memorial Scholarship-**  
Mara Lance, Charles Nessel, Marcia Nessel

**Tippecanoe Educational Endowment-**  
Kelly Grim, president, Diana Borchers, Nancy Carus, Gordon Honeyman, Carolyn Hyde, Sam Spano, Claire Timmer, Virginia Vocke, Nancy Yarger, Tim Zigler



## Discretionary Grant Awards

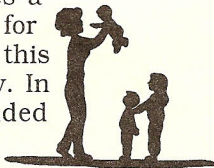
# MAKING THE COMMUNITY BETTER ...ONE GRANT AT A TIME

Our community is ever changing. And with it, so are the needs of its citizens. Responding to them, today and in the future, is the challenge of the Tipp City Area Community Foundations' grantmaking efforts. Consider this record of achievement and then ask yourself: Is my community a better place because of the Foundation? We humbly suggest that your answer will be, "yes".

➤ Since 1943, discretionary grant awards have climbed to an annual average of over \$60,000. As of December 31, 2001, the total of all discretionary grants awarded exceeded \$1,045,000.

The following discretionary grants awarded through the Distribution Committee in 2001 help meet the community's changing needs. Imagine how different things would have been for the needy, the schools, the sick and the future without this support.

**Child Care Choices (\$1,078)** purchases a television, VCR and audio/visual cart for the training workshops conducted by this child care resource and referral agency. In 2001, 641 childcare providers attended these training workshops. Also in 2001, 520 referrals were made for 720 children to receive childcare in Miami County.



**Hospice of Miami County, Inc. (\$1,500)** upgrades the computerized patient record keeping system for this organization, which served 281 patients and families in 2001.

**Little Lighthouse Day Nursery & Kindergarten (\$3,000)** upgrades the playground equipment for children attending this year-round childcare program.



*Needy Baskets delivered emergency food supplies to 216 area families (698 people) in 2001, a 30% increase over 2000. Fifty volunteers performed 2,480 hours of service to meet the demands.*

**Needy Baskets of Southern Miami County (\$4,882)** supports the work of this emergency food service in the communities of Bethel and Monroe Twps.

**The Overfield Early Childhood Program, Inc. (\$407)** encourages children to create their own books through the purchase of a book lamination and binding machine for this preschool, which is recognized nationally as a leader in program excellence.



*Prom night brings the school year nearer to its close...another reason to celebrate*

**Parents Who Care (\$500)** supports an alcohol- and drug-free after-prom party for junior and senior students of Tiptecanoe High School.

### Tipp City Exempted Village School Awards:

➤ (\$953) challenges parents of kindergarten students to assist teachers in their child's education through the distribution of pamphlets espousing parent involvement.

➤ (\$3,900) updates the playground equipment at both elementary schools in order to improve the gross motor skills of students.



*Recess is an important part of a balanced school day*

➤ (\$2,300) invites author Ann Rinaldi to spend a day with 200 7th & 8th graders and discuss literature and Ohio history. Ms. Rinaldi wrote *The Second Bend in the River*, a novel these students read for both language arts and social studies classes.

➤ (\$1,390) sends 4th grade students to SunWatch Indian Village and the Miamisburg Mound to experience first-hand what Indian life was like in the Miami Valley hundreds of years ago.

➤ (\$2,002) treats 6th grade students to two Victoria Theatre performances that tie into their studies of ancient Egypt and the genre of adventure stories.

*(continued on next page)*

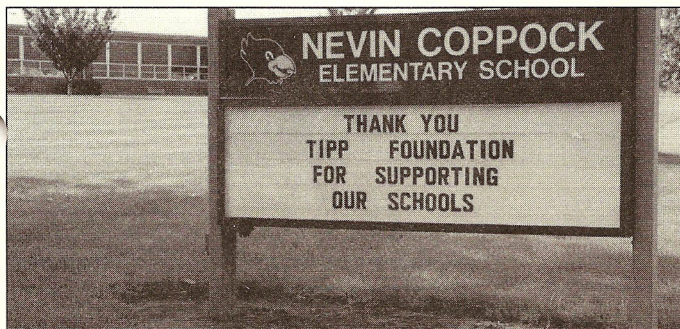




*Monarch butterflies are colorful specimens for life cycle learning*

- (\$3,060) hatches imaginations of 1st graders through the purchase of science kits that teach animal traits, characteristics and habits of frogs, moths, butterflies and plants.
- (\$737) enriches the 5th grade life science program by providing materials to study plant life cycles.

- (\$293) replaces 150 slides used in high school art history and appreciation coursework.
- (\$5,405) responds to the needs of first grade students to have more leveled reading books, the primary source for reading instruction, in the classroom. Leveled reading books allow students to incrementally increase reading skills.
- (\$3,398) purchases the "Spotlight" reading program for kindergarten classrooms.



- (\$1,000) improves the performances of high school choir students by pairing them with the "Musical!" professional choral ensemble for training and critique prior to the Ohio Music Education District Contest.
- (\$934) transports students to the days of slavery in the 1800s as they experience a ride on the Underground Railroad through *Freedom Train*, the Victoria Theatre musical production of the life of Harriet Tubman.
- (\$2,814) effectively teaches science and ecology through the music of the Banana Slug String Band, a quartet of musician/educators, to elementary school students.
- (\$995) helps the high school band keep its rhythm by purchasing a new quad drum for the marching band percussion section.

**Tipp City FISH (\$250)** subsidizes the operations of this volunteer-driven organization, which provides transportation for Bethel & Monroe Twp. residents otherwise unable to get to medical appointments.

**Tipp City Lions Club (\$500)** focuses on optical health of the needy by providing funds for eye examinations and glasses.



*Mum Festivals perennially feature the THS marching band*

**Tipp City Music Boosters (\$1,877)** spices up the look of the musicians of Tippecanoe High School through the purchase of uniforms for the band and flags and flag poles for the Devilaires Dance Team.

**Tipp City Parks Department (\$3,044)** plants trees in the parks of Hampton Woods and Woodlawn neighborhoods.

**Tipp City Public Library (\$4,000)** assists in the purchase of new books, including bestsellers, children's titles and reference books, to inform and entertain library patrons.

**Tipp City Public Library (\$5,400)** connects children and young adults to the world of technology through the purchase of two computers.

**Tipp-Monroe Community Services, Inc. (\$1,722)** adds a fifth computer to the office of this broad-based service organization.



*Tippecanoe Educational Endowment Trustees Diana Borchers (l) and Virginia Vocke are among the organization's decision-makers.*

**Tippecanoe Educational Endowment (\$1,000)** prepares this volunteer organization for its next phase of growth by fully underwriting a professionally led strategic planning session for its board members and community advisors.

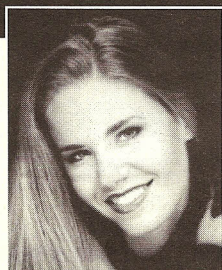


The Tipp City Area Community Foundations and its funds are components of The Dayton Foundation. Leadership for the Tipp City Area Community Foundations rests in our own community while fiscal oversight is maintained by The Dayton Foundation, which serves the Dayton/Miami Valley area. This partnership allows for the Tipp City/Bethel communities to benefit from local leadership and profit from resources pooled with others for investment growth. For more information please call 667-2206.



## And the winners are...!

Seven scholars were awarded grants to further their education in 2001 through Foundation funds. The donors set criteria for each award. Application information for future scholarships can be obtained through the helpful staff of the Bethel and Tippecanoe High Schools' guidance offices. And the winners are...



### Rebekah K. Davis

John S. & Louise T. Miller  
Memorial Scholarship

to attend Otterbein College

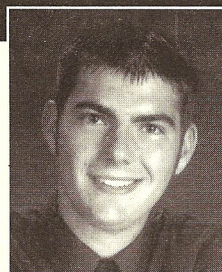
*"With the assistance of your scholarship I will be able to begin the next step on my education journey...thank you for your generosity and understanding of the assistance a college student needs to succeed."*



### Emily Elser

Heather & Holly LeGros Memorial  
Scholarship

to attend The University of  
Findlay



### Garrett Ginter

Robert E. Nessel Memorial  
Scholarship

to attend The Ohio State  
University

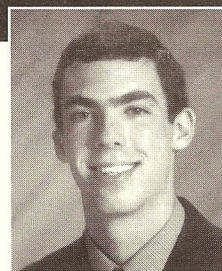


### Emily Reeves

Heather & Holly LeGros Memorial  
Scholarship

to attend Bowling Green State  
University

*"Receiving this scholarship is an incredible honor. My only regret is that I never got a chance to know Heather and Holly, but from what I have heard they were exceptional young women. I am proud to accept this scholarship."*



### Eric Tollefson

Jeanette C. Gaston Memorial  
Music Scholarship

to attend Rose-Hulman Institute  
of Technology



### Michael A. Trick

David W. Dinsmore Scholarship

to attend Sinclair Community  
College



### Tara L. Zimmerman

Lester & Cleon Studebaker Bowers  
Scholarship

to attend Urbana University

*"Thank you for choosing me as the recipient of your generous scholarship. It is greatly appreciated by my family and I."*

## Giving Tommorrow

As the Tipp City Area Community Foundations prepares for our community's future, legacy donors continue to play a vital role. As a commitment to future generations, the following generous people have provided for gifts that eventually will come to the Foundation for the benefit of others.

**\* Anonymous Donor (1) \* John & Kay Berk \* Lois Kessler \* Jim & June Kyle \* Ortho S. Marko \* Warren E. Miltenberger**

Unlike a current gift where distribution begins during the donor's lifetime, a legacy gift is activated upon asset transfer, after the lifetime of the donor. A legacy becomes a memorial for charitable causes in which the donor believes.

Here are 4 Things You Can Do Today to Leave a Legacy

- ① Leave a gift in your will for the charitable organizations that made a difference in your life. Less than 3% of all wills settled contain a charitable provision. Imagine the positive impact on our community if everyone made even a modest donation to a favorite nonprofit. The provision can be part of a new will or added to your existing will as a codicil.
- ② Consider using assets for your charitable gift. These can include stocks, bonds and CDs. Such gifts may even provide you tax savings.
- ③ Name your favorite charity as the beneficiary of your IRA or pension plan.
- ④ Purchase a new life insurance policy naming your favorite charity as the beneficiary, or sign over an existing insurance policy.

*Tipp City Area Community Foundations would be pleased to provide you with additional information on any legacy gifts you may be considering. You may call Heather Bailey, Foundation Administrator, at 937-225-9974 to confidentially discuss any questions.*



# GIVING THROUGH ENDOWMENT FUNDS

All funds are listed with market values as of December 31, 2001.



You may be wondering where the Foundation gets its money for the work it does in the community. Fair question. Here's the answer.

Since 1943, donors just like you have created funds that distribute income annually. The distributions are made in the form of grants. (See pages 2-3 for this year's grant awards.) By leaving the principal intact, the original donation is available to earn interest year after year to generate grants for generations to come. Funds set up in this form are called endowments, and, as of December 31, 2001, the Tipp City Area Community Foundations has set aside \$2,078,491 in this manner.

Most donors who establish an endowment fund make a commitment to bring the fund to at least \$25,000 in assets, which can be accomplished over time. Endowment funds can serve a wide variety of charitable causes – civic, cultural, educational, environmental, health, religious and social service-related. They can assist charities in Bethel and Monroe Twps. and beyond. Listed below are the needs currently being met through endowments.

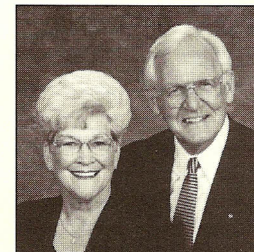
Whatever cause a donor chooses to support with the creation of an endowment, the Foundation and the Board of Trustees ensure that the donor's wishes are fulfilled. This is made possible through the volunteer work of the Distribution Committee of the Foundation, which actually selects the grants to be awarded.

The endowment funds that follow represent the growing history of the Tipp City Area Community Foundations and exemplify our donors' commitment to society and to community philanthropy. Over the decades, these funds have provided vital charitable dollars for virtually every area within our community. They will continue to give, in our donors' names, for generations to come.

Individual gifts are welcome additions to these endowment funds. By making a contribution to an existing fund, a donor's gift will join others' for maximum charitable benefit. See how to do this on the last page of this report.

## New Endowment Funds (January 1, 2001 – December 31, 2001)

**Jim & June Kyle Family Fund-2001** honors the former vice president of Spring Hill Nurseries and chair of the Tipp City Area Community Foundations' distribution committee and his wife. Unrestricted dollars will help meet the changing needs of Tipp City and its surrounding area.



June & Jim Kyle

### **Elizabeth Spano Scholarship Fund-2001 (\$20,660)**

This fund will ensure that the memory of this 10-year-old girl will endure. Beginning in 2009, the fund



*Elizabeth Spano lost her battle with cancer in July of 2001. In her memory, hundreds of people came together to raise dollars for the Elizabeth Spano Scholarship Fund.*

will award scholarships to graduating Tippecanoe High School young women, who have been active in cheerleading, basketball or softball, activities that Elizabeth Spano enjoyed.

### **Tipp City Area United Fund Endowment-2001 (\$44,431)**

This fund will help encourage community-wide health and human service assistance in Monroe and Bethel Twps. Programs to be supported are education, counseling, character-building activities and emergency aid.

### **Tipp City Rotary Club Scholarship Fund-2001 (\$71,315)**

This fund will assist the Tipp City Rotary Club in awarding annual scholarships to deserving graduates of Bethel and Tippecanoe High Schools.

## Funds Established Prior to January 1, 2001

### **Lester & Cleon Studebaker Bowers Scholarship Fund-2000 (\$7,053)**

This fund will salute excellence by awarding scholarships to Bethel High School graduates pursuing a degree in agriculture, dietary science, education or childhood development. It was established by the Bowers' children in honor of their parents' 50th wedding anniversary.



Cleon & Lester Bowers

### **David W. Dinsmore Scholarship Fund-1999 (\$10,338)**

An interest in things related to Bethel Schools was a trademark of David Dinsmore over the years, including his handsomely restored 1921 school bus. For this reason the scholarship created in his name for Bethel students becomes an especially fitting tribute to the good deeds Dinsmore achieved in his lifetime.

### **Jeanette C. Gaston Memorial Music Scholarship Fund-1992 (\$15,499)**

Tippecanoe High School seniors, who have participated in the Tipp City Band, and have demonstrated leadership skills and academic aptitude are eligible for this annual award established in memory of Jeanette Gaston. Miss Gaston died in a car accident in 1991 while a freshman at Ball State where she played the trombone in the band. She was majoring in engineering and physics.



**August Henke Fund-1950 (\$26,893)** In 1923, at the age of 92, August Henke's obituary shouted "Tippecanoe's Oldest Man". It's therefore fitting that his fund, established in his memory by his daughter, Emma Henke Warner, provides comfort and support of needy and aged men.

**William H. Kendig Fund-1957 (\$3,156)** Youth in Tipp City benefit from awards made from this fund. William and Loletha Kendig lived for a short while in a home at Plum and Third Streets and had no children of their own.

**Heather & Holly LeGros Memorial Scholarship Fund-1999 (\$17,080)**

This fund honors the memory of these sisters by awarding scholarships to students attending four-year colleges or universities. Heather and Holly LeGros were killed in separate automobile accidents in their senior years at Tippecanoe High School.

Heather & Holly  
LeGros



**John S. & Louise T. Miller Memorial Scholarship Fund-1999 (\$12,019)** Bethel High School students with aptitude, ability and interest are eligible to apply for this award created in memory of the Millers. The Millers set up housekeeping in Bethel Twp. following their marriage in 1903.



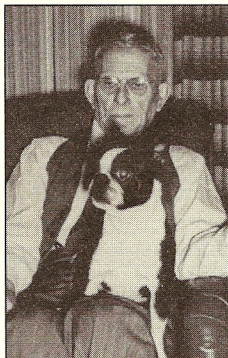
Lucille Milner

**Lucille L. Milner Fund-1997 (\$64,516)**

For over 70 years, Mrs. Milner has enjoyed the beauty, shade, fragrance and texture added to our city parks and streets by its urban forest. Her desire to support the future of Tipp City's trees is reflected in this fund, which provides for the purchase of trees for planting in the parks and along the streets. Plantings are coordinated with Tipp City and its Park Board.

**Robert E. Nessle Memorial Scholarship Fund-1994 (\$17,148)**

This fund establishes an award for Bethel High School graduates attending Miami University or The Ohio State University, and celebrates the diverse life that Rob Nessel led before his death. He was a valedictorian at Bethel High School, a summa cum laude graduate of Miami University and a doctoral candidate in New York University's economics program.



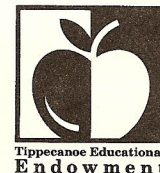
Ed Timmer

**The Tipp City Foundation Fund-1943 (\$1,724,374)** This fund was created for the exclusive support of the charitable endeavors benefiting the citizens of Tipp City. Originally established through a \$1,300 gift

from Ed Timmer, owner of Miami County Lumber, it was later added to significantly by his daughter, Helen Timmer.

**The Tippecanoe Community Foundation Fund-1999 (\$20,770)** Supporting charitable and cultural endeavors to improve and maintain the quality of life in the communities of Bethel and Monroe Twps. is the mission of this fund.

**Tippecanoe Educational Endowment-1999 (\$23,231)** This fund was established by the Tipp City Board of Education to support enrichment programs in its school, which are not otherwise funded through tax dollars.



Tippecanoe Educational  
Endowment

## Governance

A dedicated group of community leaders takes care of the day-to-day work of the Foundation serving as its Board of Trustees. Their commitment includes monthly meetings, quarterly grants distribution sessions and educating the community about the Foundation.



Trustees as of December 31, 2001 — Front Row: Nancy McAlpin, Jackie Wahl, Joan Creech, Heather Bailey. Back Row: Gordon Honeyman, Jesse Chamberlain, Jim Kyle, Mike Lightle, Matt Timmer, Jerry Weikert. Not pictured: Becky Coughlin, Marilyn Richards.

Founder

Edward Timmer

Trustee Financial Institution

Firststar Bank, N. A.

Secretary to the Trustees

O. Jesse Chamberlain

Emerita Trustees

Ruth Hawley 1978-2001

Lucille Milner 1980-2001

Past Foundation Trustees

Donn Davis 1985-1990

Clayton Finch 1943-1985

Dr. C. M. Kemper 1943-1955

Maurice Kreider 1955-1990

Ralph Staup 1950-1985

Frank W. Suerdick 1943-1956

Helen Timmer 1943-1987

Orville F. Whitmer 1943-1980

Past Secretary to the Trustees

Frank A. Fennell 1943-1970



# Giving Today: 2001 Contributors

The Tipp City Area Community Foundations is privileged each year to receive contributions of all sizes from individuals, organizations and corporations to support activities that improve the quality of life for area residents. The Board of Trustees extends its gratitude to the many donors who contribute to the betterment of our region through the Foundation.

## Contributions Received in Memory or Honor of

James Blasingame \* Lester & Cleon Bowers \* Marty Brown \* David W. Dinsmore \* Jeanette C. Gaston \* Brad Gibson \* Chad Grisham \* Emily A. Herkins \* Heather LeGros \* Holly LeGros \* Christopher M. Mains \* Ada Milby \* Robert E. Nessle \* Elizabeth Spano \* Joseph C. Trick, Jr.

**Contributors** - Mr. & Mrs. Charles Alleger • Sue Amlin • Mr. & Mrs. Paul Argeroplos • Mr. & Mrs. Dwayne Asher • Thomas B. Atkinson • Mr. & Mrs. Anthony Baggiano • Mr. & Mrs. Daniel Bagi • Clara T. Baker • Mr. & Mrs. William Barker • Mr. & Mrs. Gary Bashore • Karen Beagle • Mr. & Mrs. Robert Beck • Mr. & Mrs. Donald Belt • Mr. & Mrs. Brian Bensman • Mr. & Mrs. John Berk • Mr. & Mrs. Terry Bernander • Barbara A. Billings • Elizabeth M. Bishop • Mr. & Mrs. Trenton Bledsoe • Mr. & Mrs. Robert Border • Mr. & Mrs. Clifford Borowski • Keith Bowers • Lester & Cleon Bowers • Mr. & Mrs. Sidney Bowers • Mr. & Mrs. Todd E. Bowers • Mr. & Mrs. Rex Bradley • Mr. & Mrs. Ronald Brewer • Billie J. Brinkman • Broadway Elementary School • Broadway P.A.L.S. • Kimberly L. Brookhart • Lucinda M. Brown • Mr. & Mrs. Michael Bruns • Brush Creek Church of God • Walter & Heidi Burton • Mr. & Mrs. Patrick Butler • Mr. & Mrs. Charles Chalfant • Child Counseling Center • Mr. & Mrs. Scott Clodfelter • Mr. & Mrs. Thomas Closser • Thomas & Amy Cochran • Mr. & Mrs. James Coughlin • Creative Extruded Products, Inc. • Mr. & Mrs. James Dando, Jr. • Dayton Classics • Dayton Metro Youth Basketball • Mr. & Mrs. William Deen • Mr. & Mrs. Terrence Devlin • Patty S. Dinsmore • Dolly, Inc. • Lynne M. Duluk • Lucille Durst • Dysinger & Stewart, LPA • Tom & Sandy Dysinger • Elizabeth Spano Scholarship Fall Fundraiser Guests • Mike & Sharon Erbaugh • Debbie Eshelman • Exhibit Concepts • Favorite Insurance Agency, Inc. • Federal APD-Federal Sign Corp. • Fritz's Main Street Construction Co. • Mr. & Mrs. Steven Fulton • Mr. & Mrs. James Garrity • Mr. & Mrs. John Gaston • Terry & Loretta Gaston • Mr. & Mrs. Bernard Gaydosik • Gem City Gymnastics & Cheerleading, Inc. • Mr. & Mrs. Jeffrey Grawe • Mr. & Mrs. Benjamin Gregg • James H. Grew, Jr. • Mr. & Mrs. Rick Grisham • Mr. & Mrs. Garry Gross • Mr. & Mrs. Ronald Harris • Mr. & Mrs. Donald Hazel • Mr. & Mrs. Brian Heeney • Michael W. Heitzman • Lori & Bill Herkins • Mr. & Mrs. Jim Hinkle • Crystal L. Hitchens • Gordon H. Honeyman • I.O.O.F. Tippecanoe Lodge No. 247 • Imaging Physicians, Inc. • J & L Wood Products, Inc. • Mike & Karen Jackson • Jeffrey's Home Systems • Jeff L. Johnson • Mr. & Mrs. Bill Jones • Mr. & Mrs. Donald Kahut • Mr. & Mrs. Dennis Kirlin • Mr. & Mrs. Lawrence Knight, Jr. • Luanne K. Kondel • Dr. & Mrs. Thomas Kupper • L.W. Milby, Inc. • Mr. & Mrs. Stephen Lammers • Mr. & Mrs. Bruce Leibrock • Lexis-Nexis • Lifestages • Mr. & Mrs. Michael Lightle • Dave & Kitty Lobo • Mr. & Mrs. Jeffrey Locker • Mr. & Mrs. Douglas Lowe • L.T. Ball Parents • Mr. & Mrs. Joseph Mains • Joann F. Makowski • Rodney R. Martino • Douglas R. McDermott • Jim & Cheryl McKee • Jerry McJunkin • Bruce & Ann McKenzie • Merrill Lynch • Dr. John S. Miller • Milton-Union Boosters • Mr. & Mrs. Joseph Miskowski • Monroe Federal • Mr. & Mrs. Brett Musser • Nevin Coppock Parent-Teacher Club • New Haven Construction • Mr. & Mrs. William Nicholson • Donald H. Ochs • Mr. & Mrs. Rick O'Cull • Ohio Valley Medical Group • Mr. & Mrs. Jeffrey Olson • Pampered Paws • Rita J. Partlow • Mr. & Mrs. Howard Parks • Peggy J. Parks • Mr. & Mrs. Mike Pfeffenberger • Peoples Savings Bank of Troy • Mr. & Mrs. Michael Pignatiello • Mr. & Mrs. Fred Plough • Eric Polansky • Mr. & Mrs. Danial Purvis • Mr. & Mrs. Thomas Rawlins • Mr. & Mrs. David Reeder • Mr. & Mrs. Michael Reid • Repacorp Label Products • Reynolds & Reynolds Employee Foundation • Mr. & Mrs. Ronnie Ritter • Robbins-Gioia, LLC • Mr. & Mrs. Paul Rogers • Patricia J. Roskowski • Josephine Rusu • Mr. & Mrs. Nick Rusu • S & G Painting Contractors, Inc. • S K Mold & Tool, Inc. • S & R Goldsmith Jewelers • Betsy J. Shafford • Melody K. Shingler • Sigma Phi Gamma International, Inc.-Mu Epsilon • Shari Simms • Eunice L. Siner • Smallenbarger Lawn Care, Inc. • Mr. & Mrs. Lloyd Smith • Rosemarie Smith • Mary E. Spano • Mr. & Mrs. Dennis Spitler • Springmeade Card Party Players • Mr. & Mrs. Kevin Stephens • Ursula F. Stevenson • Mr. & Mrs. Christopher Stier • Mr. & Mrs. Michael Stucke • Mr. & Mrs. Jack Thomas • Matt & Claire Timmer • Rose M. Timmer • Tip Top Canning Co. • Tipp Central School Central Connection • Tipp City Area United Fund • Tipp City Dairy Queen, Inc. • Tipp City Junior Baseball League • Tipp City Music Boosters, Inc. • Tipp City Rotary Club • Tipp Eye Center • Tippecanoe School Athletic Booster Club • Tomkins Industries, Inc. • Town & Country Market, Inc. • Tri-State Aluminum Distributors • Mr. & Mrs. Jason Trick • Trophy Nut Co. • Troy BK Root Beer, Inc. • Pamela L. Tucci • USA Water Ski Headquarters • USI Cable Corp. • Mr. & Mrs. Gary C. Vance • Mr. & Mrs. Robert Vanleeuwen • Voss Honda • Anna K. Wahl • Bob & Jackie Wahl • Fay Waldrop • Mr. & Mrs. Thomas L. Walker • Cynthia K. Watson • Jessica L. Wilson • Winblad Automotive Specialists, Inc. • Mr. & Mrs. Wayne Wolf • Ruth M. Wood • Mr. & Mrs. John C. Zahora • Tim & Jean Zigler

*Every effort has been made to ensure the completeness and accuracy of these names. We regret any errors or omissions and request that you contact Heather Bailey at (937) 225-9974 with any corrections.*



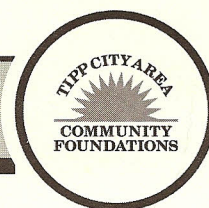


The Dayton Foundation  
Tipp City Area  
Community Foundations  
2100 Kettering Tower  
Dayton, Ohio 45423

Nonprofit  
Organization  
U.S. Postage  
PAID  
Dayton, Oh  
Permit No. 688

## Tipp City Area Community Foundations

*Donating over \$1,045,000 to Community Projects since 1943*



# MAKE YOUR MARK



Please consider contributing a gift, no matter how large or small, to the Tipp City Area Community Foundations for work in the community.

Thank you for your support of Tipp City Area Community Foundations!

The enclosed contribution of \$ \_\_\_\_\_ is from

NAME \_\_\_\_\_

ADDRESS \_\_\_\_\_

CITY \_\_\_\_\_ STATE \_\_\_\_\_ ZIP \_\_\_\_\_

TELEPHONE \_\_\_\_\_

Please make checks payable to:  
Tipp City Area Community Foundations

- ☐ **My gift is to be added to the unrestricted fund. A gift of this type is actually a gift to the community at large. Instead of benefiting just one agency or cause, your gift will be used to help us make grants to a wide variety of charitable, educational, health and cultural programs.**

----- OR -----

My gift is to be added to one of the following existing funds: *(see pages 5 & 6 for detailed descriptions)*

- ☐ Lester & Cleon Bowers Scholarship
- ☐ David W. Dinsmore Scholarship
- ☐ Jeanette C. Gaston Music Scholarship
- ☐ August Henke Fund
- ☐ William H. Kendig Fund
- ☐ Jim & June Kyle Family Fund
- ☐ Heather & Holly LeGros Scholarship
- ☐ John S. & Louise T. Miller Scholarship
- ☐ Lucille L. Milner Fund
- ☐ Robert E. Nessel Scholarship
- ☐ Elizabeth Spano Scholarship
- ☐ Tipp City Area United Fund Endowment
- ☐ Tipp City Rotary Club Scholarship
- ☐ Tippecanoe Educational Endowment

- ☐ My gift is in honor/memory of \_\_\_\_\_  
(circle one)

I would like to receive information about:

- ☐ gifts that return income to me
- ☐ including Tipp City Area Community Foundations in my estate plan
- ☐ giving gifts of stock

*All gifts are tax deductible to the fullest extent allowable.*