



# *2010 Annual Report*

*Community,  
History,  
Progress,  
Pride*



# Letter from the President

Dear Neighbors,

Thank you for taking time to review our Annual Report. Since 1943, Tipp Citians have been taking care of their own through the Tipp City Area Community Foundations.



In 2010, the Foundations awarded over \$62,000 in grants to organizations in Tipp City, Monroe Township and Bethel Township. Through the generosity of our donors, we have been able to improve the lives of thousands of individuals with grants supporting the schools, parks, arts and the needy.

I hope you will consider helping us by making a donation. Your gift will touch the lives of many within our community now and long into the future. I would also encourage you to consider becoming a Legacy Donor by including the Foundation in your estate planning.

A handwritten signature in dark ink, appearing to read 'Jim Ranft'.

Jim Ranft

President  
Tipp City Area Community Foundations

## Table Of Contents

Letter from the President	i
Giving Back	1 - 3
Scholarship Awards	3
Funds of the Tipp City Area Community Foundations	4 - 6
Donors	7 - 11
History and Leadership	12
Applying for a Grant	13
Leave a Legacy	13



# Giving Back

*Communities evolve. The needs of its citizens change. Responding to those needs, today and in the future, is the challenge of the Tipp City Area Community Foundations' grantmaking efforts. Typically, grants fall into six broad categories. Here is the list of those categories and the grants made in them. They reflect the social hurdles that the community has faced during the recent economic downturn of our country.*

As of December 31, 2010, more than \$1,551,297 has been awarded in our community in the form of discretionary grants since 1943!

The following discretionary grants total \$62,889.77.

## SOCIAL SERVICES

**Bethel Hope, \$1,000 and \$1,583.81,**

assists citizens of Bethel Township and the surrounding areas in meeting basic needs during times of critical personal downturns.



**Needy Baskets, \$7,500 and \$5,000,** helps this agency meet an expanding demand in the last part of the year, which was expected to increase by 35% in 2010 over 2009. Their services include food vouchers for the elderly, toy and shoe vouchers for children, and parcels of food for hungry families.

**Tipp City Enrichment Program,**

**\$2,200,** purchases two computers for the administrators. Enrollment for Fall 2010 in the center was over 475 children, which provides quality care for children outside of the school day and in the summer.

**Tipp City Public Library, \$3,385,**

completes the renovation to its new meeting room by purchasing a projector and whiteboard.

**Tipp Monroe Community Services,**

**\$3,633.65,** funds the Community Relief Program that provides financial assistance for rent, utilities and prescriptions to individuals.

**Tipp Monroe Community Services, \$500,**

replenishes the Mobile Meals Program, which provides one hot meal a day to homebound seniors or disabled residents.

**Tipp Monroe Community Services,**

**\$3,500,** anticipates an increased demand in the summer of 2011 for this school-aged, summer lunch program called Lunch on Us.

## ARTS & CULTURE

**Community Minded Women, \$550 and**

**\$600,** continues the custom begun in 1944 of a Tiptecanoe High School Senior Girls' Traditional Tea, saluting the young women about to graduate.

**Dayton Philharmonic Orchestra, \$2,000,**

underwrites the expenses associated with bringing music to both Bethel and Tipp City schools. Specifically, students will experience live orchestral performances, learn about music and musical concepts, and have their

classroom lessons and learning enriched through demonstrations of music's correlation to academic subjects including language arts, history, geography, social studies, math and science.

**St. John's Early Childhood Program,**

**\$320,** provides for a visit from the Dayton Philharmonic String Quartet to perform "The Three Bears."

**Tipp City Area Arts Council, \$2,500,**

enthusiastically supports 2010's Canal Music Festival. The concert is one more way that the Council fulfills its mission: To be dedicated to the promotion, development and support of the visual, musical, physical and literary arts in Tipp City and surrounding areas.

**Tipp City Exempted Village Schools,**

**\$2,000,** promotes Stagecrafters Summer



Theatre Camp, giving children a two-week experience working on stage and behind the scenes of a play.

*table needs of Tipp City, Monroe Township and Bethel Township through grantmaking.*



**Tipp City Exempted Village Schools, \$984**, introduces 5th grade students to an artistic production at the Victoria Theatre. This performance is designed to enhance the Ohio Department of Education's academic standards and is accompanied by study guides.

**Tipp City Exempted Village Schools, \$1,018.50**, gives 8th grade students the opportunity to attend "We The People", a Victoria Theatre performance. This musical revue teaches students about the three branches of government, the First Amendment, Presidential elections, democracy and the judicial process.

**Tipp Monroe Community Services, \$1,500**, purchases, repairs and maintains instruments available through the Band Instruments Program. These instruments are used by children who would not otherwise be able to afford to participate in the school band.



**We Care Arts, \$1,000**, supports the Art Café, a fun, art-based after-school program for elementary to middle school-aged students with disabilities.



## EDUCATION

**Bethel Local Schools, \$756.41**, supports kindergarten and 1st grade students with the purchase of science curriculum materials like Food Group Bingo, a Nutrition Pyramid flannel board, and sorting sets to name a few. This grant is made possible through the generous support of the Radle Family Fund for Science Education.



**Little Lighthouse Preschool & Daycare, \$281**, engages 31 preschoolers in learning through two special programs. The first encourages scientific thinking skills through age-appropriate laboratories brought on site. The second introduces them to the sounds of a symphony with a visit to a Dayton Philharmonic concert.

**Child Care Choices, \$2,000**, purchases

books for the Story Lady, an educator who will make more than 150 visits to childcare centers and home childcare providers in the school year. This year's emphasis will be on math, science, art and music including the investigation of clouds and shapes. Later in the year, children will explore nonstandard units of measurement.



**Tipp City Exempted Village Schools, \$875**, enriches the science and social studies curriculum for 1st grade students through inquiry-based learning. Opportunities for students to go beyond the State standards and experience live, hands-on learning arise with visits to destinations like Carrillon Park and visits from places like Discovery Museum.

**Tipp City Exempted Village Schools, \$900**, enables 4th grade students to visit SunWatch Indian Village and the Miamisburg Mound.

**Tipp City Exempted Village Schools, \$1,119.95**, purchases digital e-books for the middle school library.

**Tipp City Exempted Village Schools, \$1,200** purchases two

Apple iPads for the middle school media center. This technology can be used in a whole classroom setting or with individual students.



**Tipp City Exempted Village Schools, \$473**, illustrates the world beyond through a planetarium field trip for high school science students.

**Tipp City Exempted Village Schools, \$1,152**, expands a collection of 3rd grade interactive board games that teach math and reading skills.

**Tipp City Exempted Village Schools, \$1,350**, sparks the imagination and curiosity of the 3rd grade students with a trip to Ohio Caverns.

**Tipp City Exempted Village Schools, \$1,520**, purchases 28 student response clickers. These small, handheld devices allow students to respond electronically to questions posed by the teacher.



## ENVIRONMENT

**Tipp City Exempted Village Schools, \$3,000**, defrays the cost of L. T. Ball's annual 5th grade excursion to Camp Kern in Oregonia, Ohio.

**Tipp City Exempted Village Schools, \$1,750**, introduces Artist in Residence Chris Rowlands to the LT Ball students for the Miami County Park's Watershed Program. Students will use creative writing and musical skills to create songs that summarize the knowledge they have gained.

**Tipp City Parks Department, \$1,750**, plants 10 red bud trees in Kyle Park. This grant is made possible through the generous support of the Lucille L. Milner Fund.

## RECREATION

**Parents Who Care, \$500**, supports the parent-led Tiptecanoe High School After Prom, which offers an alcohol- and drug-free environment for THS prom attendees.

## Tipp City Enrichment Program,

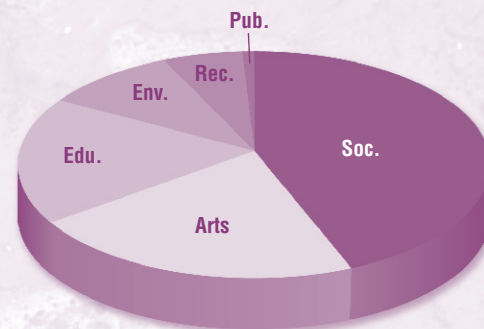
**\$1,110.38**, enhances the summer activities offered to the children who attend this extended care program. Children from kindergarten through 6th grade will explore places like COSI and Ohio Caverns thanks to this program, which offers support to working parents.



**Tipp City Parks Department, \$1,877.07**, marks the third grant from the Warren G. Miltenberger Fund and the ongoing building of a pavilion in Canal Lock Park. In 2008, the concrete pad anchoring the pavilion was poured. In 2009, a roof was added. In 2010, stone work around the supports were laid and shaker style siding and a weathervane were installed.

## PUBLIC HEALTH

**Tipp Monroe Community Services, \$500**, aids the Diaper and Formula Fund, an emergency program that assists families with small children.



## For the Record: Discretionary Grants Awarded

### Category of Need

<b>Social Services</b>	\$28,302.46	44%
<b>Arts &amp; Culture</b>	\$12,472.50	21%
<b>Education</b>	\$11,627.36	18%
<b>Environment</b>	\$6,500.00	10%
<b>Recreation</b>	\$3,487.45	6%
<b>Public Health</b>	\$500.00	1%
	<b>\$62,889.77</b>	<b>100%</b>

## Scholarship Awards

The following students received scholarship awards through the Foundations in 2010. Donors who established these funds set the criteria for each award. Sincere thanks are extended to the helpful staff of the Bethel, Tiptecanoe and Miami East High Schools' guidance offices to help award these grants.

### The Scholars Are:

Lester and Cleon Studebaker Bowers Scholarship – Hailey Partridge – to attend Wright State University

David W. Dinsmore Scholarship – Vanessa Fulton – to attend Sinclair Community College

Jeanette C. Gaston Memorial Music Scholarship – Allison Lemkuhl – to attend The Ohio State University

Heather and Holly LeGros Memorial Scholarship – Allison Chin – to attend The College of Wooster

Sarah Merritt Memorial Scholarship Fund – Allison Chin – to attend The College of Wooster

John S. and Louise T. Miller Memorial Scholarship – Samuel Butler – to attend Sinclair Community College

Robert E. Nessle Memorial Scholarship – Adam Loewer – to attend The Ohio State University

Elizabeth Spano Scholarship – Leah Schiller – to attend Bentley University



# What is a Fund?

*A fund is the basic building block of a community foundation. Funds are named for their purposes, for their donors, or as memorials, and most of the funds operate as perpetual endowments, distributing only their net income in the form of grants. Others distribute principal, either at specific times set forth at the fund's creation or at the suggestion of the fund's advisors. Almost any charitable purpose can be served through a fund.*

The funds described in this report have been created by individuals and organizations. They represent the growing history of the Tipp City Area Community Foundations, which began in 1943 and exemplify our donors' commitment to society and to community philanthropy. The funds will continue to give, in the donors' names, for generations to come.

Any individual, organization, or business may make a contribution to these endowment funds. By making a contribution to an existing fund, a gift will join others for maximum charitable benefit.

This year we have added three new funds to the Foundations. They are the **Lester & Cleon Bowers Family Scholarship Fund**, the second fund established by this family, **the Sarah Merritt Memorial Scholarship Fund**, and the **Tipp City Public Library, Inc., Fund**. All 21 funds are listed with market values as of December 31, 2010. Together they total \$2,487,665.13.

Memorial contributions were received in memory of three outstanding community members in 2010; their families are actively

working with the Foundations to create memorials with the proceeds. Katherine "Kitty" Lobo, Amy Kronour and Ellen Cotterman all made their marks on our community in their lifetime. The contributions given in their names will either be used to establish individually named funds or will be used to join existing funds for the purposes established by the families. The formality of establishing the funds may be completed in 2011.

## Funds of the Tipp City Area Community Foundations

### **NEW** Lester & Cleon Bowers Family Scholarship Fund – 2010 (\$21,951.52)

This fund honors the Bowers family and their commitment to the Miami East community through a scholarship fund. Graduating Vikings who demonstrate that they have put forth their best effort academically, while demonstrating a high degree of personal integrity and commitment to community service, are eligible for this award.



### **Lester & Cleon Studebaker Bowers Scholarship Fund – 2000 (\$7,930.09)**

This fund will salute excellence by awarding scholarships to Bethel High School graduates pursuing a degree in agriculture, dietary science, education, or childhood development. It was established by the Bowers' children in honor of their parents' 50th wedding anniversary.



### **David W. Dinsmore Scholarship Fund – 1999 (\$9,614.20)**

In tribute to this 1934 graduate of Bethel High School and past president of the Bethel School Board, this fund will award scholarships to Bethel High School graduates and to students completing their studies at Miami Valley Career Technology Center.

### **Jeanette C. Gaston Memorial Music Scholarship Fund – 1992 (\$26,232.03)**



Tippicanoe High School seniors who have participated in the Tipp City Band and have demonstrated leadership skills and academic aptitude are eligible for this annual award established in memory of Jeanette Gaston. Miss Gaston died in a car accident in 1991 while a freshman at Ball State University, where she played the trombone in the band and was majoring in engineering and physics.

### **August Henke Fund – 1950 (\$32,078.09)**

Emma Henke Warner, daughter of August Henke, established this fund to provide comfort and support for needy and aged men. A native of Germany, August Henke was considered the oldest living resident in Tippicanoe when he died in 1923 at the age

of 92.

### **Jim & June Kyle Family Fund - 2001 (\$16,888.07)**

As a trustee of the Foundation's grant distribution committee, Jim Kyle saw firsthand the positive impact that grants can have on our community. For this reason, trustee emeritus Jim Kyle and his wife, June, created this unrestricted fund to support charitable and cultural endeavors for the citizens of Bethel and Monroe Townships.

### **Heather & Holly LeGros Memorial Scholarship Fund – 1999 (\$499.99)**

Scholarships are awarded to graduating students in memory of these two sisters. Heather and Holly LeGros were killed in separate automobile accidents in their senior years at Tippicanoe High School.

### **NEW Sarah Merritt Memorial Scholarship Fund – 2010 (\$12,399.69)**

This fund honors the memory of Sarah Merritt by awarding scholarships to graduating Tippicanoe High School senior women athletes. Eligible students are those planning to attend a four-year college and demonstrate personal characteristics of Sarah, including the high energy, desire, dedication, and determination to succeed. The candidate should also show good sportsmanship in their participation in athletics.



### **William H. Kendig Fund – 1957 (\$1,861.96)**

Youth in Tipp City benefit from awards made from this fund. William and Loletha Kendig, who lived for a short time in a home at Plum and Third Streets, had no

children of their own.

### **John C. & Louise T. Miller Memorial Scholarship Fund – 1999 (\$15,666.62)**

This fund honors this Bethel Township farming family by providing college scholarships to graduates of Bethel High School in Miami County. Four generations of the Miller family have attended Bethel Township schools. John Cable Miller graduated in 1932; John Adam Miller graduated in 1956; John Stewart Miller graduated in 1979; and John Caleb Miller will graduate from Bethel High School in 2011.

### **Lucille L. Milner Fund - 1998 (\$67,642.40)**

For over 70 years, Mrs. Milner enjoyed the beauty, shade, fragrance, and texture added to Tipp City's parks and streets by its urban forest. Her desire to help ensure the same beauty for future generations led her to establish this fund, which provides for the purchase of trees for planting in the parks and along the streets. Plantings are coordinated by Tipp City and its Park Board.

### **Warren G. Miltenberger Fund – 2008 (\$59,444.62)**

Supports the out-of-doors that Warren held dear through the acquisition, upkeep, maintenance, and preservation of public park



table needs of Tipp City, Monroe Township and Bethel Township through grantmaking.



land or other natural areas.

### **Robert E. Nessle Memorial Scholarship Fund – 1994 (\$18,861.39)**

This fund establishes an award for Bethel High School graduates attending Miami University or The Ohio State University and celebrates the diverse life that Rob Nessel led before his death. Rob was valedictorian at Bethel High School, a summa cum laude graduate of Miami University and a doctoral candidate in New York University's economics program.



### **Radle Family Fund for Science Education – 2007 (\$22,945.69)**

This fund provides assistance with science and conservation activities for the Bethel Local Schools, which could include scholarships for students or faculty, materials in the science classroom, or student-initiated projects within the community. Woodrow "Woody" and Mary Radle called Bethel Township "home" since 1946; it is here that

they raised their two children.

### **Elizabeth Spano Scholarship Fund – 2001 (\$26,736.04)**

This fund will ensure that the memory of this 10-year-old girl will endure. Beginning in 2009, the fund awarded scholarships to graduating Tippecanoe High School young women, who have been active in cheerleading, basketball, or softball, all activities that Elizabeth Spano enjoyed.

### **Tipp City Area United Fund Endowment – 2001 (\$33,746.31)**

This fund will help encourage community-wide health and human services assistance in Monroe and Bethel Townships. The focus of support will be on education, counseling, character-building activities, and emergency aid.

### **Team Scenna Fund for Building Restoration – 2009 (\$9,345.24)**

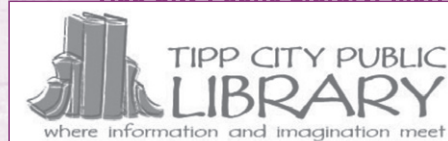
An architectural mix adds to the streetscape enjoyed by Frank Scenna and Heather Bailey on their early morning downtown walks. This fund has been created to help maintain that charm. Grant awards will support the exterior maintenance and upkeep of properties in and around a close proximity of Tipp City's historical downtown district.

### **The Tipp City Foundation Fund – 1943 (\$1,587,259.10)**

This fund was created to support charitable endeavors benefiting the citizens of Tipp City. Originally established through a \$1,300 gift from Ed Timmer, owner of Miami County Lumber, it was later added to significantly by

his daughter, Helen Timmer.

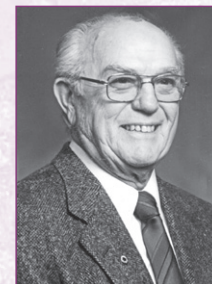
### **NEW Tipp City Public Library, Inc.**



The purpose of this Fund is to provide funding necessary for the on-going services of the Tipp City Public Library, including the purchase of books, magazines and collections, the purchase of equipment and the funding of capital projects.

### **The Tippecanoe Community Foundation Fund - 1999 (\$221,706.46)**

The mission of this fund is to support charitable and cultural endeavors to improve and maintain the quality of life in the communities of Bethel and Monroe Townships. In 2009, it was added to with a gift from the Kessler Family Remainder Trust, remembering Robert and Lois Kessler. In 2010, it was added to with memorial contributions celebrating the life of Bethel Township turkey farmer and entrepreneur, Kenneth O. Bowman.



### **Tippecanoe Educational Endowment Fund - 1999 (\$293,655.41)**

This fund was established by the Tipp City Board of Education to support enrichment programs that are not otherwise funded through tax dollars in its schools. In 2009, it was added to significantly with a gift from the Kessler Family Remainder Trust, remembering Robert and Lois Kessler.



# Donors

The Board gratefully acknowledges the following donors who made contributions in 2010. Though every attempt has been made to assure the accuracy of this list, we apologize for any omissions or errors that may have been made.

## A

Ann Adams  
Mr. & Mrs. Gregory T. Adkins  
Michael & Charlotte Akers  
Shivani Alamo  
Chuck & Kathy Allen  
Mr. & Mrs. Michael L. Anticoli  
Brian Ares  
Mr. & Mrs. Frank W. Ares  
Mr. & Mrs. Mark Ares  
Mr. & Mrs. Brent A. Armentrout  
Anthony & Joyce Armocida  
Mark & Cameron Armstrong  
Glen & Patty Ash  
Molly Auld

## B

Barbara Jo Bailey  
Todd & Katherine Baker  
Cynthia S. Barhorst  
David & Judy Barhorst  
Mr. & Mrs. Kevin J. Barkow  
Stephen & Kathleen Bartalo  
Jon Baumhauer  
State Senator Bill & Karen Beagle  
Jeff & Sally Beam  
Julie A. Beam

Mr. & Mrs. Joseph R. Bellas  
Brian & Catherine Bensman  
Dennis & Jane Bensman  
John & Kay Berk  
Mr. & Mrs. Jeffrey D. Bernhold  
Mr. & Mrs. Robert Billings  
John Blackburn  
Raymond Blake  
Bob & Vickie Blakey  
Bob Evans Restaurant  
Mr. & Mrs. Robert J. Bollinger  
Robert & Lisa Bollinger  
Steve & Laurel Booher  
Don & Zola Bouquot  
Ruth Bowers  
Kathy Bowman

Mr. & Mrs. Kenneth Bowman  
Nancy Bowman  
Brian & Angela Boyd  
Mr. & Mrs. Robert P. Bradley  
Steven & Mary Ann Brandell  
Brethren Retirement Community  
Broadway Elementary School  
Broadway Technology Fund  
Michelle Brooks  
Mr. & Mrs. Terry M. Brown

Richard & Sheryl Brownlee  
James & Theresa Brytus  
Matt & Jennifer Buehrer  
Monica & John Bush  
Michael & Janet Butsch

## C

James Caccamo & Joyce Platfoot  
Bruce & Patty Cahill  
Bruce & Jean Calladine  
Anastasia L. Campbell  
John & Vicki Campbell  
Dave Carroll  
Pat & Nancy Carus  
Central Buckeye Conference  
Central District Athletic Board  
Jesse Chamberlain  
Jawn & Rita Chasteen  
Classic Products, Inc.  
Matt & Amanda Cleckner  
Scott & Susan Clodfelter  
Mr. & Mrs. David S. Cobb

Tom & Amy Cochran  
Robert & Robin Cole  
Steven & Lisa Colebaugh  
Community Minded Women  
Dan & Tammy Conley  
Heidi Coppock  
Ellen Cotterman  
Mr. & Mrs. Daniel L. Couch  
Jim & Becky G. Coughlin  
Staff from County Corp  
Phil & Lois Cox  
Michael & Linda Cramer  
Dale & Susan Creamer  
Tom & Joan Creech  
Mr. & Mrs. Bradley K. Crow  
John & Jenna Crull  
Mr. & Mrs. Nicholas Culver



## D

Christopher & Virginia Dahm  
Nancy Dankof  
Carole Davis  
Donald & Jeanne Davis  
Gloria Davis  
Roy & Mary Davis  
Brian & Carli Dean  
Mr. & Mrs. Thomas C. Deffet  
Mr. & Mrs. Jon Dehass  
Gerry Demers  
Mr. & Mrs. Thomas G. Derringer  
Scott & Kathy Dixon  
Christy Donnelly  
Ann Drake  
Scott & Angela Druley  
Jim & Carol Dunkel  
Robert Dunlevey, Jr.  
Sebaly Shillito & Dyer  
Tom & Sandy Dysinger

## E

Gerald & Valerie Eberly  
Mr. & Mrs. John P. Elder  
Energy Optimizers  
David & Karen Engelbert  
Commissioner Jack Evans  
Rachel A. Everhart

## F

Feldman Realty  
Gary & Marilyn Fennell  
Caroline Field  
Wayne & Linda Fischbach  
Mark & Kemberli Fischer  
Amy Fisher  
Rosemary Fitzgibbon  
David & Marcia Fletcher  
Richard & Pamela Fontaine  
Carla M. Frame  
Mr. & Mrs. Christopher M. Freitag  
Gary & Deb Froelich  
Joseph & Leigh Ann Fulford

## G

Dave & Tracey Gaier  
Carolyn Gallehue  
Terry & Loretta Gaston  
Wilma K. Gaston  
Rod Gasvoda  
Vickie Gearheart  
Michael Gerlaugh  
Kelly & Dee Gillis  
Frank & Paula Goldsberry  
Mr. & Mrs. Mark A. Goldschmidt  
Dr. & Mrs. Brian J. Gootzeit  
Susan Gorey  
Carl Greer  
Mr. & Mrs. Douglas P. Greve  
Dave & Kelly Grim  
Brad & Patty Gross  
Violet Gump

## H

Deborah Haas  
Hugh & Peg Hadden  
Jason & Beth Hadden  
Mr. & Mrs. Gus Hagen, Jr.  
Lorrie Hager  
David R. Hamber & Anita  
Bowman-Hamber  
Mr. & Mrs. James P. Hamberg

Mr. & Mrs. Kevin J. Hartings  
Jewell & Hartshorn  
Michael Hartshorn  
Barbara Haven  
Fred & Ginny Havens  
Andrew Goodwin & Sarah Heil  
Mr. & Mrs. Anthony H. Heinl  
David & Brenda Henagen  
Greg & Kim Hewitt  
Mr. & Mrs. Jim A. Hinkle  
John & Karen Hinze  
Dr. Patrick B. Hodges  
Joseph & Jean Hogle  
Elizabeth Hollis  
Kipp Holloway  
Thomas & Barbara Holmes  
Amy & David Homan  
Mr. & Mrs. Robert C. Honeycutt  
Gordon Honeyman  
Greg & Cathy Horn  
Mr. & Mrs. Joseph C. Hoskins  
Steve Hottle  
Troy & Shannon Hounshell  
Mr. & Mrs. David L. House  
Adrienne Howell  
Robert & Ann Huelsman  
Arlene J. Hughes  
Mr. & Mrs. Brent M. Hughes  
Jeff & Judy Hutchins





# I

Rick & Amy Iagnet  
Jeff & Ellen Ireland

# J

J & L Wood Products, Inc.  
Mike & Karen Jackson  
Judi Jacobson  
Rick & Kate Johnsen  
Mr. & Mrs. Matthew W. Jones  
Rebecca L. Jones  
Kelly & Amy Joseph

# K

Mr. & Mrs. Thomas J. Keller  
Colleen Kenworthy  
Leonard & Lisa Kenyon  
Mr. & Mrs. Byron D. Kimmel, III  
Mr. & Mrs. Gregory J. Kinnison  
Charles & Meggan Klein  
Dave & Jeanne Koch  
James & Mindy Koehler  
John & Nanci Koepke  
Randye & David Korte  
Dr. John & Amy Kronour  
Mary Kukul  
Dr. Gretta & Josph Kumpf

# L

Mervin & Betty Lall  
The Lang School Staff  
Phil & Paula Lantz  
Keith Larsen  
R. H. Lesourd, Jr.  
Meridith & Ronald Lewis  
Kyle & Rhiannon Lewis  
Pamela Ann Liebhard  
David Lobo  
Harold & Marlene Lobo  
Marie Lobo  
Elaine Gigliotti Long  
Gerald & Jeannette Long  
George Lovett - Lovett & Lovett  
Guy Lowry  
Luken Interiors  
Dan & Erin Ly

# M

Michael & Lisa Maag  
Richard & Jane Malafa  
Mr. & Mrs. Douglas W. Mann  
Denise March  
Juliette & Helmut Marko  
Susan Martin  
Kevin & Raquel Martin  
Dr. & Mrs. Nicholas Mathias

Mr. & Mrs. Frank Maus  
Julie & Ronald Maynard  
Lori Mayo  
Mark & Monica Mays  
Mr. Michael K. McCaffrey & Vonda M. Alberson  
Dean & Darlene McClurg  
Mr. & Mrs. Kevin T. McClurg  
Mr. & Mrs. Noel McGinnis  
Jim & Cheryl McKee  
Russ & Michele Mead  
Mr. & Mrs. Terry Meece  
Darlene Meehan  
Keith & Barb Meyer  
Dr. John S. Miller  
Mr. & Mrs. Dwight Miller  
Eric Miller - Chaddsford Winery  
Bob & Flo Miller  
Steve & Wanana Miller  
Sally Minnich  
Charles & Beverly Moffitt  
Martin & Margaret Moran  
Michael & Cynthia Moran  
Randal J. Morgan  
Rhonda Morgan  
Mr. & Mrs. Dale Mosier

Motorist Mutual Insurance Company  
Mr. & Mrs. Kent A. Moyer  
Bruce & Teresa Muir  
Mr. & Mrs. Ronald Mullins  
Scott & Tracy Murray

# N

David & Nancy Neer  
Timothy Cornell & Shaun Nicholson  
Lisa Nicolini  
Daniel J. Nimer  
Jonelle Norman  
Charles & Teresa Northcutt

# O

Mark & Christa Oen  
Roberta & Sarah Ogdie  
Ohio School Athletic Association - SW District  
Jason & Tracy Oldiges





## P

Mike & Judy Papenek  
Gene & Jo Ann Parks  
Jack & Patricia Parren  
Belia Parrish  
Jeanne Parsons  
Sarah & Gregory Patterson  
Mr. & Mrs. Michael J. Patzek  
George & Susan Pavlakos  
Tina Pearson  
Tom & Pauline Persing  
Pickrel, Schaeffer, & Ebeling Co.  
L.P.A.  
Thomas & Diane Platfoot  
Mr. & Mrs. Michael J. Porto  
Raenell & Sean Poynter  
Kari & Mike Prall  
Adam & Amanda Pressel  
Carlton & Mary Preston  
Bill & Helen Prichard  
Dolores Purvis  
Dr. Michael & Melissa Puthoff

## R

Peter Rakay  
Tim & Sue Rambeau  
Dr. Jim & Noel Ranft  
Daniel & Alice Rasor  
Phil & Lisa Ratermann  
Jill L. Reese  
John & Joyce Reichard  
Norma Reineke  
Reliable Contractors, Inc.  
Greg & Valerie Relue  
David & Rebecca Rexrode  
Thomas & Susan Rex  
Mr. & Mrs. Randall L. Riddell  
Gary & Kimberly Riebe  
Mr. & Mrs. Randy L. Rindler  
Debra & Randy Rindler  
Mr. & Mrs. Robert W. Ringo  
Mr. & Mrs. Daniel E. Rittenhouse  
Rochelle Rogers  
Tom & Claudia Rogers  
Marilynn Rowe  
Royal Crest Marketing &  
Management Services, Inc.  
Mr. & Mrs. James L. Rucker  
Mr. & Mrs. Timothy D. Ryan  
Colleen Ryan

## S

Ruth A. Safreed  
Jim & Rachel Sagona  
Mr. John Sauls  
Mr. & Mrs. Mark D. Sauls  
Richard & Mary Scalzo  
Frank Scenna & Heather Bailey  
Mr. & Mrs. Dave Schairbaum  
Mr. & Mrs. Daniel R. Schall  
Pete & Rebecca Schinaman  
Douglas & Catherine Schivley  
Michael & Anne Schleich  
Donna & Paul Schlosser  
Curtis & Janet Schreier  
Mr. & Mrs. Gregg Schulze  
Mr. & Mrs. Dennis J. Seger  
John Seibert  
Alfred & Debra Seibert  
Jeffrey & Sharon Senney  
Virgina Ann Shadwick  
Brian Shilt  
Charles & Diane Shiningier  
Eric & Stacy Shirley  
Matthew & Barbara Shomper  
Erik V. Sickie  
Sigma Phi Gamma Int'l Inc.  
Heidi R. Silvers

Patricia Singer  
Robert & Brenda Sjostrom  
James Slocum & Patricia Lynch  
Smith Teachers Social Committee  
Dr. Chuck & Loraine Smith  
Dennis & Susan Smith  
Steven & Jeannie Smith  
Teresa Lobo Snyder  
Danny & Carolyn Snyder  
Southeast Ohio Athletic Board  
Greg & Susan Southers  
Mr. & Mrs. Robert G. Southers  
Mr. & Mrs. Ronald W. Sowder  
Mr. & Mrs. Samuel L. Spano  
Mr. & Mrs. Robert Spiller  
Burl & Lorayne Stanley  
Mark & Della Stearns  
Mr. & Mrs. Robert D. Stefanko  
Mr. & Mrs. Ron L. Stenger  
Jeanne Sterling  
Mr. & Mrs. Gary R. Stewart  
Stewart & Stewart Lawyers, LTD  
Mr. & Mrs. Steven R. Stockelman  
Larry & Carol Strunk  
Dan & Sharon Studebaker  
Mr. Steven L. Suerdick Jr.  
Ron & Pam Sutton



# T

Charles Tackett  
 Taggart's Pub  
 Steve & Candy Teague  
 James P. Thein, CLU  
 Jack T. Thein -  
 Thein Financial Group  
 Jerome & Mary Thobe  
 Marcia Thompson  
 Mr. & Mrs. Mickey Thompson  
 Randy & Jane Thompson  
 Richard & B'Linda Thompson  
 Helga Thornton  
 Bradford Tillson & Family  
 Matt & Claire Timmer  
 Tipp City Enrichment Program, Inc.  
 Tippecanoe Education Endowment  
 Tippecanoe Gazette LLC  
 Tippecanoe Class of 1957

Mr. & Mrs. William R. Titley  
 Mary Titus  
 TMS Gift Committee  
 Frederick & Christine Tokarz  
 Pamela Tomlinson  
 Michael & Audrey Toohey  
 Trophy Nut Company  
 Troy Piqua Aquatic Swim Club  
 Tucker/Hall, Inc.

# V

Mr. & Mrs. Ross M. Vagedes  
 Vail Family  
 Valley View Local School District  
 Brad & Michelle Vath  
 Luis Miguel Garzon Vega

# W

Eugene & Saundra Wagner  
 Bob & Jackie Wahl  
 Katie Wahl  
 Mr. & Mrs. Michael W. Walker  
 Kathleen & Edward Wallace  
 John & Trina Wampler  
 Phil & Pat Wampler  
 John & Ginger Warner  
 Robin Warren  
 William & Besty Waxman  
 Weaver Bros. Inc.  
 Herman & Grace Webb  
 David & Karen Weber  
 Julia S. Weikert  
 Jeffery & Margaret Welbaum  
 Lynette Welch  
 Heather & Bill Wendel

James & Kim Wharton  
 Mr. & Mrs. Wesley P. Whidden  
 Bill & Cynthia Willhelm  
 Mr. & Mrs. Barry W. Willoughby  
 Phyllis D. Wilmer  
 Mr. & Mrs. Christopher W. Winblad  
 Robert & Kellie Woodruff  
 Jerry & Jill Woodyard  
 David & Elizabeth Wyse

# Y

Nancy Yarger  
 Heather Yunker

# Z

Steven & Edith Zimmerman  
 Marion & Jane Zwolski

## Contributions were received in Memory or Honor of the following individuals:

Ken Bowman  
 Ellen Cotterman  
 Robert Elder  
 Jeanette Gaston  
 Gordon Honeyman

Amy Kronour  
 Jim & June Kyle  
 Katherine "Kitty" Lobo  
 Warren Miltenberger  
 Rob Nettle

Robert Price  
 Elizabeth Spano  
 Tippecanoe Class of 1957  
 P. W. Wampler



Amy Kronour



Kitty Lobo



Ellen Cotterman

## Publication Talent

**Author:**  
 Heather Bailey

**Trustee Photographer:**  
 Sharon Elaine Photography

**Cover Photographer:**  
 Andrea Nay

**Creative Layout & Design:**  
 rmbdesign



# History and Leadership

*Started on August 3, 1943 with a \$1,300 gift from Ed Timmer, The Tipp City Foundation benefits Tipp City and Monroe Township. It is a community trust. In 1999, The Tippecanoe Community Foundation was established in corporate form to work in tandem with the trust. This is why the reference to the Foundation is sometimes plural, "Foundations."*

The formation of the second Foundation offers two unique advantages. Its corporate form allows more flexibility in accepting, investing, and awarding assets than the original trust. Also, the second Foundation's charter expanded the mission to include Bethel Township, our neighbors to the east. Both advantages give the governing bodies of the joint boards more leeway when working with donors and grantees.

The Tipp City Foundation's assets are managed with the help and guidance of U.S. Bank.

In its earliest days, Foundation trustees included Orville Whitmer, Frank Suerdick, Dr. Claude Kemper, Helen Timmer (who later added significant assets to the



trust), and Clayton (Penny) Finch. In more recent times they were followed by Ruth Hawley, Jim Kyle and Gordon Honeyman, now Emeritus members.

Board, the courts, and banking institutions. Other members are nominated from the community at-large.

In 2010, The Tipp City Foundation Distribution Committee included Mike Lightle, Chair, Heather Bailey, Dr. Jim Ranft, Matt Timmer and Jackie Wahl. Members of the companion board (The Tippecanoe Community Foundation) included Anita Bowman-Hamber, Jesse Chamberlain and Joan Creech. Together, the groups meet quarterly. Each member donates his or her time.

Distribution Committee members are appointed by various local organizations such as the Tipp City Exempted Village School

*Tipp City Area Community Foundations and its funds are component funds of The Troy Foundation. Leadership for the TCACF rests in our own community while fiscal oversight is maintained by The Troy Foundation. This partnership allows the Tipp City and Bethel communities to benefit from local leadership and profit from resources pooled with others for investment growth.*



*The Tipp City Area Community Foundations' mission is to serve and support the char*



# Applying for a Grant

*The Foundation encourages organizations interested in applying for a grant to call or write the Distribution Committee chair for assistance in determining eligibility for Foundation support, as well as for clarification about the application process and deadlines.*

*The Distribution Committee meets and reviews applications quarterly.*

Applications may be mailed to the address below. Application forms are not required, and each proposal will be reviewed carefully. Additional information may be requested.

## **Please send applications to:**

Jim Ranft, Chair

## **Tipp City Area Community Foundations**

P. O. Box 626

Tipp City, Ohio 45371-0626

Or phone 937.667.1270

## **Grant Application Deadlines**

March 1

June 1

September 1

December 1

The Tipp City Area Community Foundations welcome grant requests from organizations that benefit the Tipp City, Monroe Township, and Bethel Township communities. To be eligible for a grant, an organization must be recognized as tax-exempt under Section 501(c)(3) of the Internal Revenue Code, be nondiscriminatory, and address needs that are not met fully by existing organizational or community resources.

Some donors have chosen to give the Tipp City Area Community Foundations' Board of Trustees discretion to decide who will receive grants from their funds. These grants are called discretionary grants, listed in the GIVING BACK section of this report.

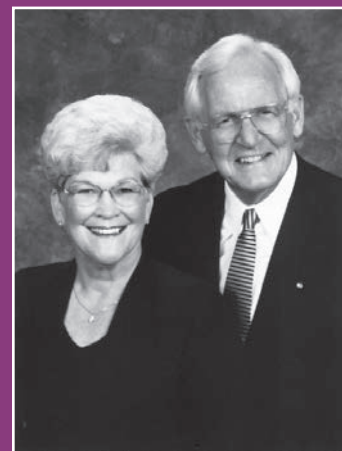
Generally, the Foundations make these grants to help launch new projects not addressed by existing organizations or to support special efforts of already established nonprofit organizations. A proposal needs to represent a unique and unduplicated opportunity that will affect a substantial number of people in the community.

# Leave A Legacy

Unlike a gift received during a donor's lifetime, a legacy gift is activated upon asset transfer after the donor's death. Legacies become a donor's memorial to their favorite charitable causes.

The following generous people have provided for gifts through their wills, insurance policies, or other planned giving financial vehicles that will eventually come to the Tipp City Area Community Foundations.

If you are a legacy donor who has not made their future contribution known to the Foundations but would like to, please contact our president, Jim Ranft, at 937-667-1270.



Anonymous Donor

Heather Bailey &  
Frank Scenna

John & Kay Berk

Jim & June Kyle

*table needs of Tipp City, Monroe Township and Bethel Township through grantmaking.*





c/o The Troy Foundation  
216 West Franklin Street  
Troy, Ohio 45373

### ***What's In a Number?***

*This year a milestone was marked. The \$1.5 million mark. That's right, as of December 31, over \$1.5 million has been awarded as discretionary grants back to our community. To be exact, the number is \$1,551,297. We think it's something to write home about!*

*Want to see this year's grants? Turn to "Giving Back" starting on page one for the complete list.*

Non-Profit Organization US POSTAGE <b>PAID</b> Troy OH Permit No. 512
--------------------------------------------------------------------------------------