



# TIPP CITY *Your Home, Your Town*

## *2011 Annual Report*



# Message from the President

*Dear Neighbors,*

*Welcome to our annual report. Generous donors, both past and present, made it possible for the Tipp City Area Community Foundations to distribute over \$60,000 in grants in 2011.*



*I invite you to visit our new website, [www.tippfoundation.org](http://www.tippfoundation.org). There you will find information on recent grant making funds, how to request a grant, and contact information for the board of directors.*

*Thank you to our donors and our legacy donors for their dedication to improving our community.*

A stylized, handwritten signature in dark ink, appearing to read 'Jim Ranft'.

*Jim Ranft*

*President  
Tipp City Area Community Foundations*

## Table Of Contents

---

Letter from the President	i
Giving Back	1 - 3
Scholarship Awards	3
Funds of the Tipp City Area Community Foundations	4 - 6
Donors	7 - 11
History and Leadership	12
Leave a Legacy	13
Applying for a Grant	13



# Giving Back

*Communities evolve. The needs of its citizens change. Responding to those needs, today and in the future, is the challenge of the Tipp City Area Community Foundations' grantmaking efforts. Typically, grants fall into six broad categories. Here is the list of those categories and the grants made in them. They reflect the social hurdles that the community has faced during the recent economic downturn of our country.*

As of December 31, 2011, more than \$1,611,843 has been awarded in our community in the form of discretionary grants since 1943!

The following discretionary grants total \$60,546.42.

## EDUCATION

### **Bethel Local Schools,**

**\$150**, sponsors a visit from Boonshoft Museum of Discovery's Slimy Science hands-on educator to the 4th grade students. As well as **\$552.53** to underwrite the science vocabulary books for 120 Kindergarten and 1st grade students. Both of these grants were awarded through the Radle Family Fund for Science, which provides assistance with science and conservation activities.

**Bethel Local Schools, \$1,400**, brings Smart Board technology to the special education department for grades 4-6.

**Bethel Local Schools, \$1,875**, packs up the 5th graders and helps to send them on an adventure at Camp Kern in Oregonia, Ohio. The grownups think the students are being sent to learn about nature. The students think they are being sent to have fun. The Foundations think that both the grownups and the students are right!



**Tipp City Enrichment Program, \$594**, purchases a laptop and video camera that will be used to help classroom activities coordinate with content standards in place in the public schools.

**Tipp City Exempted Village Schools, \$837**, updates the High School chemistry labs with purchases of small-scale reaction apparatuses that allow reactions to take place with minimal chemical use and minimal disposal concerns.

**Tipp City Exempted Village Schools, \$2,100**, hires High School honors students to tutor L.T. Ball students in math in after school programs.

**Tipp City Exempted Village Schools, \$100**, sponsors former New York Giants football player Jimmie Bell to address the Middle School in a presentation on character, values, decision-making, and substance abuse.

**Tipp City Exempted Village Schools, \$900**, enables 4th grade students to visit SunWatch Indian Village and the Miamisburg



Mound. The hallowed site was built by Adena Indians around 800 BC – AD 100 and is the largest conical burial mound in the State.



**Tipp City Exempted Village Schools, \$2,517**, supports listening skills through the purchase of REDCAT, an audio enhancement system that amplifies teachers' voices in kindergarten classrooms. When children experience fluctuating hearing due to colds, allergies and ear infections, they struggle to hear. This audio device amplifies the instructor so that students don't miss important information.

**Tipp City Exempted Village Schools, \$4,000** enriches the science and social studies curriculum for 1st grade students through inquiry-based learning. Opportunities for students to go beyond the State standards and experience live, hands-on learning arise with visits to destinations like Carrillon Park and visits from learning forums like Discovery Museum.

*table needs of Tipp City, Monroe Township and Bethel Township through grantmaking.*



**Tipp City Exempted Village Schools, \$5,000**, defrays the cost of L. T. Ball's annual 5th grade excursion to Camp Kern in Oregonia, Ohio.



## ARTS & CULTURE

**Dayton Philharmonic Orchestra, \$2,000**, underwrites the expenses associated with bringing music to both Bethel and Tipp City schools. Specifically, students will experience live orchestral performances, learn about music and musical concepts, and have their classroom lessons and learning enriched through demonstrations of music's correlation to academic subjects including language arts, history, geography, social studies, math and science.



**Tipp City Area Arts Council, \$3,500 and \$2,500**, enthusiastically supports the 2011 and 2012 Canal Music Festivals, respectively. The concert series is one more way that the Council fulfills its mission: To be dedicated to the promotion, development and support of the visual, musical, physical and literary arts in Tipp City and surrounding areas.

**Tipp City Exempted Village Schools, \$984**, purchases tickets for all 5th grade students to attend a performance at Victoria Theatre's Discover Series.

**Tipp City Exempted Village Schools, \$1,103**, sends all 8th grade students to see the drama "Salem Justice" at Victoria Theatre. Like other field trips, this excursion helps students connect cross-curriculum dots. In this case, the dots are between arts, social studies, language, communication and multi-cultural education.



**Tipp City Exempted Village Schools, \$2,000** promotes Stagecrafters Sumer Theatre Drama Camp, giving children a two-week experience working both on stage and behind the scenes of a play.

**Tipp Monroe Community Services, \$540.10**, purchases, repairs and maintains instruments available through the Band Instruments Program. These instruments are used by children who would not otherwise be able to afford to participate in the school band.

## SOCIAL SERVICES

**Bethel Hope, \$1,000 and \$1,385.79**, assists citizens of Bethel Township and the surrounding areas in meeting basic needs during times of critical personal downturns. This grant enables the ministry to continue its financial assistance program for needs such as utility payments and rent.



**Tipp City Public Library, \$1,935**, supports the technology update project, which will improve service to the patrons and the efficiency of staff.

**Tipp Monroe Community Services, \$4,500**, anticipates an increased demand in the summer of 2012 for this school-aged, summer lunch program called Lunch on Us. This is an increase of \$1,000 over the prior year's grant to this program.

**Tipp Monroe Community Service, \$500**, sponsors the School Supplies Program, which provides backpacks and associated school supplies for students in need.

**We Care Arts, \$2,000**, funds two programs for young people with disabilities with the goal of alleviating the isolation and boredom that some of these students feel. The first is the Art Café, a fun, art-based after school program for elementary to middle school-aged students. The second funds art classes for teens with physical and developmental disabilities enrolled in state mandated Transition to Work programming at Tippecanoe High School.

## ENVIRONMENT

**Tipp City Exempted Village Schools, \$575**, brings rock man Mike Manning, a retired geology and earth science teacher, to Broadway's 3rd grade students. He will share his enthusiasm for rocks through a series of interactive activities that include pantomime and hands-on learning.



**Tipp City Exempted Village Schools, \$1,590** supports the 3rd grade students' participation in Hug The Earth, a festival sponsored by the Miami County Park District. This festival brings together the learning elements of music, performing arts, geology and zoology.



**Tipp City Parks Department, \$1,818,** landscapes the new handicapped parking lot in Kyle Park, which will serve as improved access to the Junior Baseball and Softball diamonds. This grant was awarded from the Warren G. Miltenberger Fund, established in 2008 to support the out-of-doors.

**Tipp City Parks Department, \$2,046,** plants deciduous and conifer trees in the Milner Tree Grove of Kyle Park. This grant was awarded from the Lucille L. Milner Fund, established in 1998 to provide for the planting of trees in Tipp City's urban landscape.

### PUBLIC HEALTH

**Miami County Recovery Council, \$3,155,** awards a technology grant to upgrade the Crisis Hotline and Crisis Mobile Response Program. Since 1977, MCRC has served addiction and mental health clients.

**Tipp Monroe Community Service, \$2,600,** defrays the cost of a handicapped accessible front door for TMCS, located at 3 East Main Street.

### RECREATION

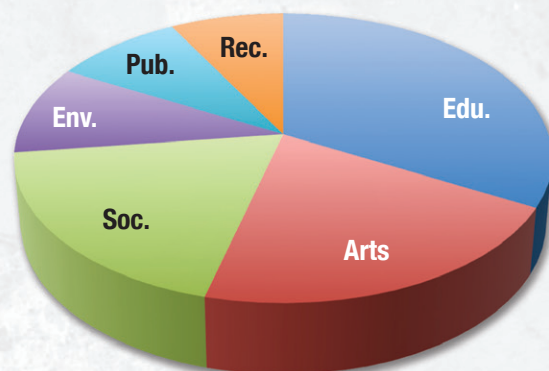
#### Indian Creek 4-H Club,

**\$1,030,** aims to enhance the shooting sports program through classes that emphasize safety. This co-ed club has over 30 active members ranging in age from 9 – 18 years old.



**Monroe Township, \$2,400,** adds to the comfort of the Nelson C. and Betty D. Borchers Nature Preserve by placing two park benches in the ten-acre commons, located at Michaels Road and County Road 25A.

**Tipp City Enrichment Program, \$1,359,** enhances the summer activities offered to the children who attend this extended care program. Children from kindergarten through 6th grade will explore places like COSI and Johnston Farms thanks to this program, which offers support to working parents.



### For the Record: Discretionary Grants Awarded

#### Category of Need

Education	\$20,025.53	33%
Arts & Culture	\$12,627.10	21%
Social Services	\$11,320.79	19%
Environment	\$6,029.00	10%
Public Health	\$5,755.00	9%
Recreation	\$4,789.00	8%
<b>Total</b>	<b>\$60,546.42</b>	<b>100%</b>

### The Scholars Are:

#### Shelby Black

Attending The Ohio State University  
Robert E. Nessel Memorial Scholarship

#### Lauren Brenner

Attending University of Cincinnati  
John S. & Louise T. Miller Memorial Scholarship and Lester & Cleon Studebaker Bowers Scholarship

#### Amanda Calhoun

Attending University of Findlay  
Elizabeth Spano Scholarship

#### Kyle Miller

Attending University of Dayton Jeanette C. Gaston Memorial Music Scholarship

#### Laura Murray

Attending University of Akron  
Sarah Merritt Memorial Scholarship

#### Mercedes Nelson

Attending Miami Jacobs Career College  
David W. Dinsmore Scholarship

#### Amanda Woolley

Attending Bluffton University  
Lester & Cleon Bowers Family Scholarship



# What is a Fund?

*A fund is the basic building block of a community foundation. Funds are named for their purposes, for their donors, or as memorials, and most of the funds operate as perpetual endowments, distributing only their net income in the form of grants. Others distribute principal, either at specific times set forth at the fund's creation or at the suggestion of the fund's advisors. Almost any charitable purpose can be served through a fund.*

Individuals and organizations have created the funds described in this report. They represent the growing history of the Tipp City Area Community Foundations, which began in 1943 and exemplify our donors' commitment to society and to community philanthropy. The funds will continue to give, in the donors' names, for generations to come.

Any individual, organization, or business may make a contribution to these endowment funds. By making a contribution to an existing fund, a gift will join others for maximum charitable benefit.

All 22 funds are listed with market values as of December 31, 2011. Together they total \$2,397,399.91.

## Funds of the Tipp City Area Community Foundations

### **Lester & Cleon Bowers Family Scholarship Fund – 2010 (\$20,599.56)**

This fund honors the Bowers family and their commitment to the Miami East community through a scholarship fund. Graduating Vikings, who demonstrate that they have put forth their best effort academically, while demonstrating a high degree of personal integrity and commitment to community service, are eligible for this award.



### **Lester & Cleon Studebaker Bowers Scholarship Fund – 2000 (\$7,102.59)**

This fund will salute excellence by awarding scholarships to Bethel High School graduates pursuing a degree in agriculture, dietary science, education, or childhood development. It was established by the Bowers' children in honor of their parents' 50th wedding anniversary.

### **David W. Dinsmore Scholarship Fund – 1999 (\$8,886.51)**

In tribute to this 1934 graduate of Bethel High School and past president of the Bethel School Board, this fund will award scholarships to Bethel High School graduates and to students completing their studies at Miami Valley Career Technology Center.

### **Jeanette C. Gaston Memorial Music Scholarship Fund – 1992 (\$25,240.32)**

Tippecanoe High School seniors who have participated in the Tipp City Band and have demonstrated leadership skills and academic aptitude are eligible for this annual award established in memory of Jeanette Gaston. Miss Gaston died in a car accident in 1991 while a freshman at Ball State University, where she played the trombone in the band and was majoring in engineering and physics.



### **August Henke Fund – 1950 (\$31,072.77)**

Emma Henke Warner, daughter of August Henke, established this fund to provide comfort and support for needy and aged men. A native of Germany, August Henke was considered the oldest living resident in Tippecanoe when he died in 1923 at the age of 92.

### **William H. Kendig Fund – 1957 (\$1,633.01)**

Youth in Tipp City benefit from awards made from this fund. William and Loletha Kendig, who lived for a short time in a home at Plum and Third Streets, had no children of their own.

### **Amy Kronour Scholarship Fund – (\$15,820)**

Remembers this teacher of special needs children. The details of this scholarship fund will be finalized in the future.



### **Jim & June Kyle Family Fund - 2001 (\$16,840.76)**

As a trustee of the Foundation's grant distribution committee, Jim Kyle saw first-hand the positive impact that grants can have on our community. For this reason, trustee emeritus Jim Kyle and his wife, June, created this unrestricted fund to support charitable and cultural endeavors for the citizens of Bethel



and Monroe Townships.

### **Kitty Lobo Scholarship Fund – (\$5,225)**

A talented Communications Coordinator of the Tippecanoe School System, Kitty's presence in the schools helped to forge and promote the district's reputation for excellence. Her ready smile and gentle approach were familiar and comforting to students, teachers, and parents alike -- and her gift with the written word was both impressive and inspiring. The details of this scholarship fund will be finalized in the future.

### **Sarah Merritt Memorial Scholarship Fund – 2010 (\$11,012.52)**

This fund honors the memory of Sarah Merritt by awarding scholarships to graduating Tippecanoe High School senior women athletes.

### **John S. & Louise T. Miller Memorial Scholarship Fund – 1999 (\$14,683.94)**

This fund honors this Bethel Township farming family by providing college scholarships to graduates of Bethel High School in Miami County. Four generations of the Miller family have attended Bethel Township schools. John Cable Miller class of 1932; John Adam Miller class of 1956; John Stewart Miller class of

1979; and John Caleb Miller class of 2011.

### **Lucille L. Milner Fund - 1998 (\$63,450.47)**

For over 70 years, Mrs. Milner enjoyed the beauty, shade, fragrance, and texture added to Tipp City's parks and streets by its urban forest. Her desire to help ensure the same beauty for future generations led her to establish this fund, which provides for the purchase of trees for planting in the parks and along the streets. Plantings are coordinated by Tipp City and its Park Board.

### **Warren G. Miltenberger Fund – 2008 (\$55,972.68)**

Supports the out-of-doors that Warren held dear through the acquisition, upkeep, maintenance, and preservation of public park land or other



# Welcome



natural areas.

### **Robert E. Nessel Memorial Scholarship Fund – 1994 (\$18,889.23)**

This fund establishes an award for Bethel High School graduates attending Miami University or The Ohio State University and celebrates the diverse life that Rob Nessel led before his death. Rob was valedictorian at Bethel High School, a summa cum laude graduate of Miami University and a doctoral candidate in New York University's economics program.

### **Radle Family Fund for Science Education – 2007 (\$21,896.25)**

This fund provides assistance with science and conservation activities for the Bethel Local Schools, which could include scholarships for students or faculty, materials in the science classroom, or student-initiated projects within the community. Woodrow "Woody" and Mary Radle called Bethel Township "home" since 1946; it is here that they raised their two

children.

### **Elizabeth Spano Scholarship Fund – 2001 (\$25,596.83)**

This fund will ensure that the memory of this 10-year-old girl will endure. Beginning in 2009, the fund awarded scholarships to graduating Tippecanoe High School young women, who have been active in cheerleading, basketball, or softball, all activities that Elizabeth Spano enjoyed in her short lifetime.

### **Team Scenna Fund for Building Restoration – 2009 (\$11,796.75)**

An architectural mix adds to the streetscape enjoyed by Heather Bailey and Frank Scenna on their early morning downtown walks. This fund has been created to help maintain that charm. Grant awards will support the exterior maintenance and upkeep of properties in and around a close proximity of Tipp City's historical downtown district.



### **Tipp City Area United Fund Endowment – 2001 (\$32,673.68)**

This fund will help encourage community-wide health and human services assistance in Monroe and Bethel Townships. The focus of support will be on education, counseling, character-building activities, and emergency aid.

### **The Tipp City Foundation Fund – 1943 (\$1,511,823.26)**

This fund was created to support charitable endeavors benefiting the citizens of Tipp City. Originally established through a \$1,300 gift from Ed Timmer, owner of Miami County Lumber, it was later added to significantly by his daughter, Helen Timmer.

### **Tipp City Public Library, Inc., Fund – 2010 (\$1,920.12)**

The purpose of this Fund is to provide funding necessary for the on-going services of the Tipp City Public Library, including the purchase of books, magazines and collections, the purchase of equipment and the funding of capital projects.

### **The Tippecanoe Community Foundation Fund - 1999 (\$209,082.83)**

The mission of this fund is to support charitable and cultural endeavors to improve and maintain the quality of life in the communities of Bethel and Monroe Townships. In 2009, it was added to with a gift from the Kessler Family Remainder Trust, remembering Robert and Lois Kessler.

### **Tippecanoe Educational Endowment Fund - 1999 (\$286,180.83)**

This fund was established by the Tipp City Board of Education to support enrichment programs that are not otherwise funded through tax dollars in its schools. In 2009, it was added to significantly with a gift from the Kessler Family Remainder Trust, remembering Robert and Lois Kessler.





# Donors

*The Board gratefully acknowledges the following donors who made contributions. Though every attempt was made to assure the accuracy of this list, we apologize for any omissions or errors that may have been made.*

## A

A.O. Smith Electrical Products  
Company  
Dr. & Mrs. Fayez D. Abboud  
Mr. & Mrs. Raymond E. Adams  
Mr. & Mrs. Stanley K. Adkins  
Gail R. Ahmed  
Mr. & Mrs. David L. Aldrich  
Karen L. Aleshire  
Kathleen Alexander  
Kevin Alexander  
Mr. & Mrs. Jim Amend  
American Legion  
Auxiliary Unit 586  
Mr. & Mrs. Michael L. Anticoli  
Mr. & Mrs. Frank W. Ares  
Mr. & Mrs. Glen D. Ash

## B

Heather Bailey & Frank Scenna  
Mr. & Mrs. Timothy R. Barnhart  
Barbara A. Beach  
Karen K. Beagle  
Mr. & Mrs. Leo Berchach, III  
Mr. & Mrs. John D. Berk, Jr.  
Mr. & Mrs. Mark A. Berning  
Caroline Bethune  
Mr. & Mrs. Kenneth M. Betz  
Mr. & Mrs. Shawn A. Bibby  
Bob Evans Restaurant  
Mr. & Mrs. Robert J. Bollinger  
Mr. & Mrs. Steven Booher  
Cleon Bowers  
Mr. & Mrs. Daryl L. Bowling  
Mary K. Bowman, PHD  
Debra A. Bringman  
Mr. & Mrs. Richard A. Brownlee  
Mr. & Mrs. Howard Burton

## C

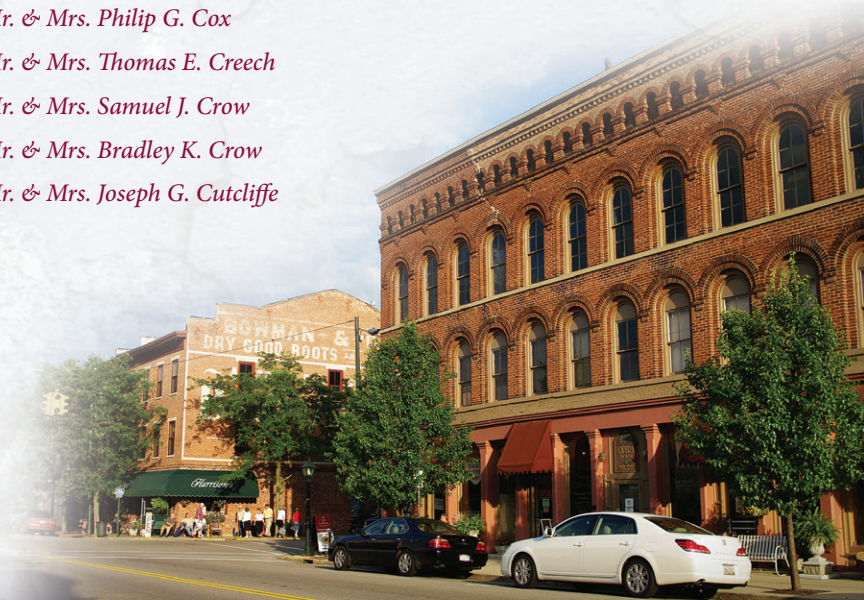
Mr. & Mrs. Pat D. Carus  
Mr. & Mrs. Joseph B. Catey  
O. Jesse Chamberlain  
Chemonics International, Inc.  
Child Care Choices Staff  
Mr. & Mrs. Caleb P. Christman  
Classic Products, Inc.  
C. P. Combs & Virginia Rieke  
Combs  
Roberta A. Comer  
Mr. & Mrs. Michael A. Cooper  
Mr. & Mrs. Philip G. Cox  
Mr. & Mrs. Thomas E. Creech  
Mr. & Mrs. Samuel J. Crow  
Mr. & Mrs. Bradley K. Crow  
Mr. & Mrs. Joseph G. Cutcliffe

## D

Bonny J. Dehus  
Mr. & Mrs. Scott J. Dixon  
Mr. & Mrs. Scott T. Druley  
Mr. & Mrs. Thomas E. Dysinger

## E

Mr. & Mrs. Gerald B. Eberly  
Barbara H. Emmons  
Stanley A. Evans  
Abbey Eyler





## F

Mr. & Mrs. Gary Fennell  
 Freda F. Ferguson  
 Roger Fettes & Son Farms, LLC  
 Vicky Fiely  
 Mr. & Mrs. William C. Flock  
 Irene F. Frederick  
 Mr. & Mrs. Christopher M. Freitag

## G

Mr. & Mrs. David A. Gaier  
 Doris A. Gamble  
 Mr. & Mrs. Terry L. Gaston  
 Wilma K. Gaston

Mr. & Mrs. Peter I. Georgeson  
 Michael L. Gerlaugh  
 Mr. & Mrs. Lee Gery  
 Judith A. Gilleland  
 Kathy G. Gilmore  
 Mr. & Mrs. Frank Goldsberry  
 Mr. & Mrs. Brian J. Gootzeit  
 Carol Graf  
 Thomas S. Green & Renee H. Matsunami  
 Mr. & Mrs. David W. Grim  
 Mr. & Mrs. Thom Grim

## H

Mr. & Mrs. Hugh Hadden  
 Mr. & Mrs. Jason Hadden  
 Mr. & Mrs. Gus Hagen, Jr.  
 Mr. & Mrs. Kurt T. Hagen  
 Mr. & Mrs. Pat Hale  
 David R. Hamber & Anita Bowman-Hamber  
 Mr. & Mrs. Jeffrey J. Hargrave  
 Mr. & Mrs. Thomas J. Heil  
 Mr. & Mrs. Anthony H. Heintz  
 Mr. & Mrs. Thomas Heintz  
 Hilton Head Emergency Physicians  
 James A. Hinkle  
 Dr. Patrick B. Hodges  
 Mr. & Mrs. Bradley A. Holloway  
 Mr. & Mrs. Robert O. Holman  
 Mr. & Mrs. Robert C. Honeycutt  
 Gordon H. Honeyman  
 Mr. & Mrs. W. Douglas Hoy  
 Hughes Development Co., Inc.  
 Mr. & Mrs. Anthony J. Husic  
 Sheffield Hyde

## J

Mr. & Mrs. Peter Jenkins  
 William H. Jenkins  
 Mr. & Mrs. Richard D. Johnsen  
 Mr. & Mrs. Kelly L. Joseph

## K

Mr. & Mrs. Gary L. Kagy  
 Mr. & Mrs. Thomas J. Keller  
 Mr. & Mrs. Charles M. Klein  
 David A. Koch, O.D.  
 Kathy Kollock  
 Mr. & Mrs. Brian Koopman  
 Mr. & Mrs. Webster M. Krise, Jr.  
 Jennifer Kroner  
 Dr. John P. Kronour  
 Mr. & Dr. Joseph B. Kumpf

## L

Mr. & Mrs. Lee O. Lampert  
 Mr. & Mrs. Chris L. Landis  
 Mr. & Mrs. Patrick D. Langley  
 Andrea L. Larger  
 Mr. & Mrs. William M. Laxson  
 Mr. & Mrs. Michael E. Lightle  
 Mr. & Mrs. Bruce E. Livesay  
 David J. Lobo  
 Mr. & Mrs. Wilfert O. Long  
 Mr. & Mrs. John W. Longstreth

## M

Mr. & Mrs. Marc A. Manes  
 Mr. & Mrs. John M. Manning  
 Mr. & Mrs. Joseph L. Marcum  
 Mr. & Mrs. Gary L. Martin  
 David F. Martin





Dr. & Mrs. Nicholas Mathias  
 Mr. & Mrs. Frank C. Maus  
 Mr. & Mrs. Steven L. McGinnis  
 Mr. & Mrs. Bruce W. McKenzie  
 Martin J. McNamer  
 Angela J. Merriman  
 Mr. & Mrs. Christian J. Merten  
 Ann M. Michalcik  
 John A. Miller  
 Mr. & Mrs. Dwight Miller  
 Ruth A. Miller  
 Phyllis S. Milliken  
 Mr. & Mrs. Brad Mitchell  
 Monroe Federal Savings & Loan  
 Mr. & Mrs. Michael P. Moran  
 Linda K. Morrison  
 Mr. & Mrs. Kent A. Moyer  
 Bruce L. Moyer & Jo Ann Bowman  
 Mr. & Mrs. Michael J. Muller

## N

Mr. & Mrs. Charles E. Nettle  
 Douglas B. Nettle  
 Robert W. Nettle  
 Nevin Coppock Gift Fund  
 Nevin Coppock Parent-Teacher Club

Nevin Coppock Staff  
 Daniel J. Nimer  
 Esther North  
 Sally Jo Northcutt

## O

Bill O'Brien  
 Mr. & Mrs. Richard H. Ording

## P

Jeanne H. Parsons  
 Mr. & Mrs. Michael J. Patzek  
 Rebecca S. Petro  
 Hla Phoone & Lal Sangliani  
 Barbara G. Pipenur  
 Mr. & Mrs. Daniel J. Poffenberger  
 Joan E. Porsch  
 Mr. & Mrs. Michael J. Porto  
 Mr. & Mrs. Michael Prall  
 Erin Prokes  
 Dolores H. Purvis  
 Harvey J. Putterbaugh

## R

Mr. & Mrs. David C. Radle  
 Dr. & Mrs. James R. Ranft  
 Mr. & Mrs. Philip A. Ratermann  
 Betty Z. Reardon  
 Mr. & Mrs. Steven C. Reeves  
 Mr. & Mrs. Bruce W. Reger  
 Reliable Contractors, Inc.  
 Mr. & Mrs. Thomas W. Rettig  
 Kelly Rhoades  
 Mr. & Mrs. Michael Rhoades  
 Mr. & Mrs. Gary C. Riebe  
 Mr. & Mrs. Randy L. Rindler  
 Riverside Research Institute  
 Mr. & Mrs. Larry E. Roan  
 Mr. & Mrs. Richard Robbins  
 Mr. & Mrs. James L. Robinson

*These donors have  
 contributed to one  
 or more of the  
 many funds listed  
 on pages 4 - 6*





Marilynn Rowe

Royal Crest Marketing &  
Management Services, Inc.

Mr. & Mrs. James L. Rucker

Frances N. Rugani

## S

Ruth A. Safreed

John Sauls

Mr. & Mrs. Dave Schairbaum

Mr. & Mrs. Daniel R. Schall

Megan Schaurer

Mr. & Mrs. Richard Schildknecht

Linda L. Sell

Mr. & Mrs. Allen Senseman

Mr. & Mrs. Rodney A. Sheets, Jr.

Mr. & Mrs. Earl Shepard

Brian Shilt

Mr. & Mrs. Eric Shirley

Mr. & Mrs. Matthew R. Shomper

Sigma Phi Gamma Int'l, Inc., MU  
Epsilon

Mr. & Mrs. Brian M. Simons

Mr. & Mrs. Richard E. Skinner

Mr. & Mrs. Charles Smith

Teresa Lobo Snyder

Mr. & Mrs. Robert G. Southers

Mr. & Mrs. Ronald W. Sowder

Mr. & Mrs. Samuel L. Spano

Mr. & Mrs. Gerald Stanley

Mr. & Mrs. Mark D. Starcher

Mr. & Mrs. Ron L. Stenger

Nicholas Stine

Mr. & Mrs. Steven R. Stockelman

Mr. & Mrs. Gary W. Stover

Mr. & Mrs. Larry D. Strunk

Steven L. Suerdick, Jr.

Mr. & Mrs. David H. Summers

Daniel R. Sutherly & Co., Inc.

Mr. & Mrs. Ron Sutton

Mr. & Mrs. Jeffrey Sweet

## T

Brenda J. Taulbee

Mr. & Mrs. Richard F. Telder

Mr. & Mrs. Jerry L. Thobe

Mr. & Mrs. Matthew Timmer

Tipp City Exempted Village Schools

Tipp City Junior Baseball League

Tipp City Players, Inc.

Tipp City Rotary Club

Tipp City Schools Bus Drivers

Tipp City Schools Cafeteria Staff

Tippecanoe Middle School

Trophy Nut Company

## U

UBS Financial Services, Inc.

## V

Mr. & Mrs. Brad Vath

Mr. & Mrs. Mike Vaughn

## W

Katrina L. Wahl

Mr. & Mrs. Robert L. Wahl

Mr. & Mrs. Michael W. Walker

Mr. & Mrs. Joseph J. Walland

Walloon Lake Ladies Golf  
Association

Judy Wampler

Mr. & Mrs. Bradley W. Warkentine

Mr. & Mrs. Norb Warner

John H. Warren

Betty Warwick

Cynthia K. Watson

Dr. & Dr. Robert E. Wenz

West Central Ohio Basketball  
Officials

Mr. & Mrs. Robert L. Westenheffer

Mr. & Mrs. James R. Wharton

Mr. & Mrs. Leon A. Whitney

Cynthia L. Wildermuth

Mr. & Mrs. Douglas Wilhelm

Mr. & Mrs. William W. Willhelm

Anne R. Willis

Mr. & Mrs. H. J. Wilson

Mr. & Mrs. Christopher W. Winblad

Mr. & Mrs. Mark O. Wogoman

Wortman's Lawn Service

Mr. & Mrs. Charles W. Wray

## X/Y/Z

XCEL Sports Medicine, LLC

Nancy G. Yarger





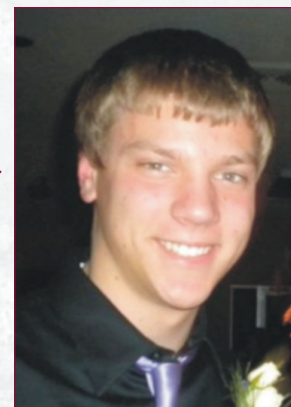
*Contributions were received in Memory or Honor of the following individuals:*



*Olive Brubaker*



*Fairy Bowman*



*John M.  
Warner*



*Heather & Holly  
LeGros*

*Dave Aufdemkampe*

*William O. Berk*

*June Fisher*

*Timothy Hawley*

*Amy Kronour*

*Kitty Lobo*

*Sarah Merritt*

*Dr. John Miller*

*Woodrow Radle*

*Linda Ray*

*Patrick Skow*

*Kim Snow*



*Kenneth  
Bowman*



*Ellen  
Cotterman*

**Publication Talent**

**Author:**  
Heather Bailey

**Trustee Photographer:**  
Sharon Hultberg,  
owner, SharonElaine Photography

**Various Photos Throughout:**  
Andrea Nay Photojournalism

**Creative Layout & Design:**  
Rob Bertke, owner, rmbdesign  
[www.rmbdesign.net](http://www.rmbdesign.net)



# History and Leadership

*Started on August 3, 1943 with a \$1,300 gift from Ed Timmer, The Tipp City Foundation benefits Tipp City and Monroe Township. It is a community trust. In 1999, The Tippecanoe Community Foundation was established in corporate form to work in tandem with the trust. This is why the reference to the Foundation is sometimes plural, "Foundations."*

The formation of the second Foundation offers two unique advantages. Its corporate form allows more flexibility in accepting, investing, and awarding assets than the original trust. Also, the second Foundation's charter expanded the mission to include Bethel Township, our neighbors to the east. Both advantages give the governing bodies of the joint boards more leeway when working with donors and grantees.

The Tipp City Foundation's assets are managed with the help and guidance of U.S. Bank.



*Members of the Foundations shown here are Front Row, left to right, Dave Grim, Anita Bowman-Hamber, Jim Ranft and Marilyn Richards. Back Row, left to right, Jim McKee, Matt Timmer, Jesse Chamberlain, Heather Bailey and Joan Creech. Not pictured are Jackie Wahl and Mike Lightle.*

In its earliest days, Foundation trustees included Orville Whitmer, Frank Suerdick, Dr. Claude Kemper, Helen Timmer (who later added significant assets to the trust), and Clayton (Penny) Finch. In more recent times they were followed by Ruth Hawley, Jim Kyle and Gordon Honeyman, now Emeritus members.

In 2011, The Tipp City Foundation Distribution Committee included Jim Ranft, chair, Heather Bailey, Dave Grim, Matt Timmer and Jackie Wahl. Members of the companion board (The Tippecanoe Community Foundation) included Anita Bowman-Hamber, Jesse Chamberlain, Joan Creech, Mike Lightle, Jim McKee and Marilyn Richards. Together, the groups meet quarterly. Each member donates his or her time.

Distribution Committee members are appointed by various local organizations such as the Tipp City Exempted Village School Board, the courts, and banking institutions. Other members are nominated from the community at-large.

## Financial Oversight

*Tipp City Area Community Foundations and its funds are component funds of The Troy Foundation. Leadership for the TCACF rests in our own community while fiscal oversight is maintained by The Troy Foundation. This partnership allows the Tipp City and Bethel communities to benefit from local leadership and profit from resources pooled with others for investment growth.*



*The Tipp City Area Community Foundations' mission is to serve and support the char*



# Leave A Legacy

*Unlike a gift received during a donor's lifetime, a legacy gift is activated upon asset transfer after the donor's death. Legacies become a donor's memorial to their favorite charitable causes.*

The following generous people have provided for gifts through their wills, insurance policies, or other planned giving financial vehicles that will eventually come to the Tipp City Area Community Foundations.

If you are a legacy donor who has not made their future contribution known to the Foundations but would like to, please contact our president, Jim Ranft, at 937-667-1270.



Arthur & Nancy Hattan

Jim & Cheryl McKee  
(Shown with Family)



Gordon  
Honeyman



John & Kay  
Berk



Jim & June Kyle



Heather Bailey &  
Frank Scenna

## Applying for a Grant

*Interested in applying for a grant? It is now easier than ever!*

*Visit [www.tippfoundation.org](http://www.tippfoundation.org) and click on the Grant Application tab.*

An application, guidelines and other helpful information are listed to make applying convenient.

Remember, the Foundation welcomes grant requests from organizations that benefit the Tipp City, Monroe Township, and Bethel Township communities. To be eligible for a grant, an organization must

be recognized as tax-exempt under Section 501(c)(3) of the Internal Revenue Code, be nondiscriminatory, and address needs that are not met fully by existing organizational or community resources.

*table needs of Tipp City, Monroe Township and Bethel Township through grantmaking.*





c/o The Troy Foundation  
216 West Franklin Street  
Troy, Ohio 45373

### ***Our Future is Growing***

*This year the list of legacy donors has grown (page 13).*

*What is a legacy donor? Someone who has named the Foundation in an estate plan.*

*When will a legacy donation be given? After a legacy donor's lifetime.*

*Why are legacy donors important? They signify the future growth of the Foundation.*

*So here's to the legacy donors. Long may they live!*